

Islington Borough Council

Tree Canopy Cover Assessment



What is Tree Canopy Cover?

Tree Canopy Cover, which is often also referred to as canopy cover and urban canopy cover, can be defined as the area of leaves, branches, and stems of trees covering the ground when viewed from above.

Canopy Cover is a two-dimensional metric, indicating the spread of canopy cover across an area. Quantifying the spatial extent of the urban forest is one of the first steps in managing this important resource and answers the fundamental questions: 'What canopy cover have we got?' and 'Where is it?'

Measuring canopy cover has helped city planners, urban foresters, mayors and communities see trees and forests in a new way, focusing attention on green infrastructure as a key component of community planning, sustainability and resilience. It is an easy-to-understand concept that is useful in communicating messages about our urban forests with both the public and policy makers.

Understanding the extent of the tree canopy cover in the borough of Islington, and its relationship with other indicators is the first step in 'measuring to manage' the urban forest. This appreciating asset (part of Islington's Natural Capital) can now be improved and maintained using this study and its data, with resources targeted to the areas that need it most.

The Authors

Annabel Buckland	- Treeconomics
Danielle Hill	- Treeconomics
Dave Hansford	- Treeconomics
Gary McGrath	- Treeconomics

This assessment was carried out by Treeconomics

Contents

Executive Summary	4
1. Introduction	8
2. Data analysis	15
3. Results and Analysis	16
4. Canopy Cover and Quality of Life	21
5. Conclusions	35
6. Recommendations	36
Appendix I i-Tree Canopy Technical Information	41
Appendix II Comparison with other UK towns and cities	44
Appendix III Trees in the National Policy Planning Framework	45
Appendix IV Summary of Ecosystem Services Provided by Trees	49
Bibliography	52

Executive Summary

Trees are arguably the single most important component of Green Infrastructure (the mosaic of parks, street trees and all other 'green assets' found in urban areas), yet are often overlooked and undervalued. In particular, trees are important because they enhance and improve the urban environment by providing a wide range of benefits (or ecosystem services) at relatively little cost. For example, there is a growing body of research which demonstrates that trees improve our health and well being. Trees also provide a 'sense of place', moderate extremes of high temperature in urban areas, improve air quality and act as a carbon sink¹.

Estimates of canopy cover for each ward in the borough of Islington were calculated (Figure 1 illustrates the area of study). The results provide a snapshot of the current tree canopy cover (table 1) and a baseline to allow for comparison with any future tree canopy surveys. The study also compared tree canopy cover with relevant statistics from the Office for National Statistics (ONS) and reviewed other available sources of geographical data on human health, wellbeing and societal factors (such as crime rates, social deprivation and life expectancy) to observe if there was any correlation with tree canopy cover.

Highlights of the report are:

The overall canopy cover of the borough of Islington is estimated at 25.0%.

In comparison with other studies (Urban Tree Cover, 2018), the canopy cover is above the average (17%) estimated in the 320 towns and cities surveyed in the UK. In comparison to the rest of London, Islington is above the average of 21% canopy cover.

The correlation between Tree Cover and Social Indicators, demonstrated that areas with increased tree cover also score higher for community wellbeing in areas such as, Life Expectancy, Lower Crime Rate and Higher House Prices.

It is suggested that Islington could reasonably aspire to a canopy cover of 30% by 2050 subject to the production of a fully costed and resourced action plan, and in alignment with the target of London to achieve 30% canopy cover.

Canopy cover by ward area figures and a selection of total canopy cover in UK cities is provided in Tables 1 and 2 overleaf.

¹ Further details are provided in later sections of this report

Canopy cover estimates across Islington range from just 13.9% in Bunhill Ward to 36.7% in Hillrise ward. Canopy cover in Islington is higher than the national average of 17% within cities, and the average across London, which is 21%.

Ward	Tree Canopy Cover (%)
Hillrise	36.7
Highbury East	36.0
Mildmay	35.4
Canonbury	34.8
St Georges	29.8
Tollington	24.9
Barnsbury	24.7
St Marys	24.6
Junction	23.0
Holloway	21.9
Highbury West	19.9
St Peters	19.8
Finsbury Park	19.0
Clerkenwell	18.3
Caledonian	17.3
Bunhill	13.9
Borough of Islington Average	25.00

Table 1: Tree Canopy Cover by Ward within the administrative area of the borough of Islington

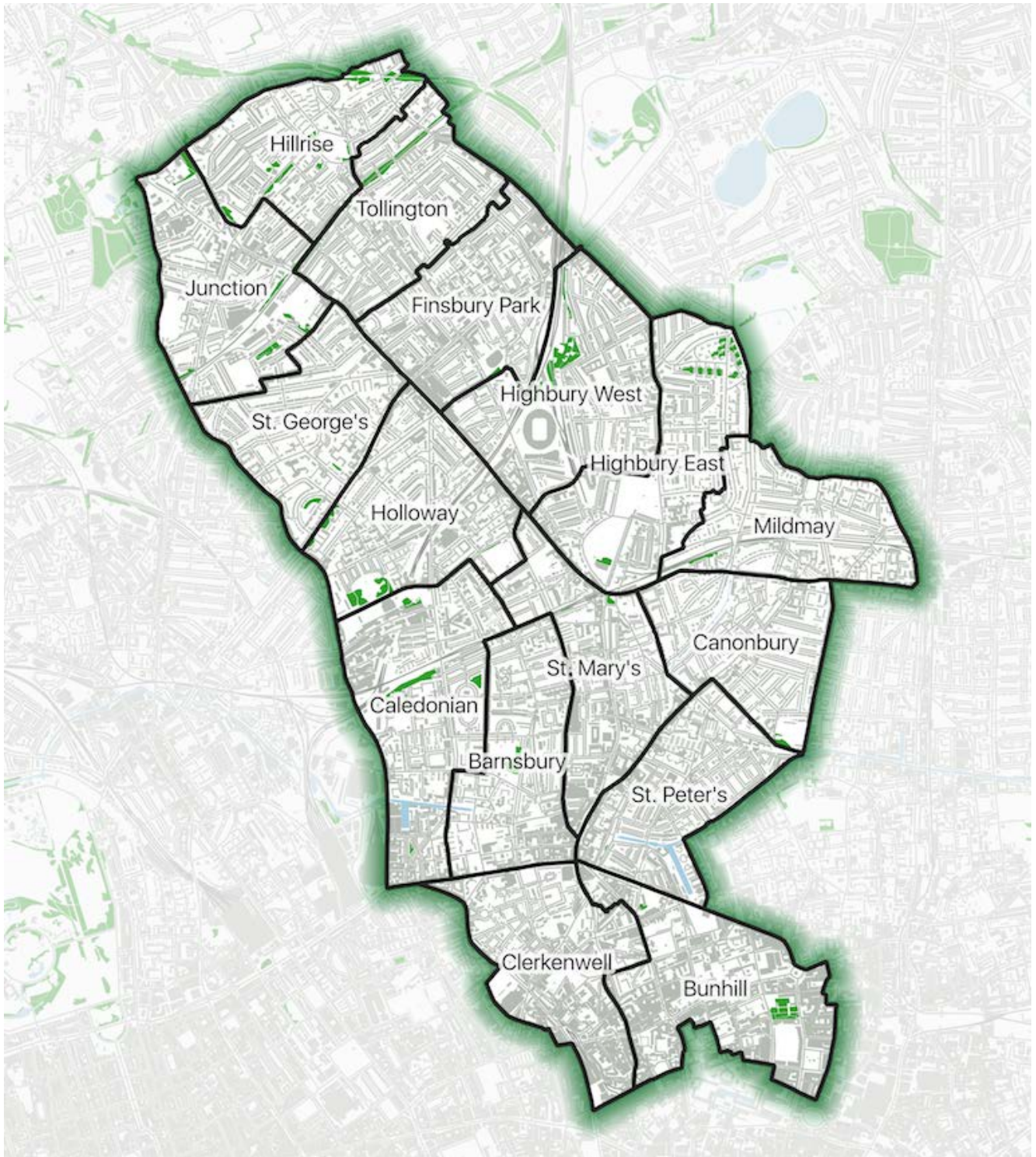


Figure 1: Ward map of Islington

City/District	% Tree cover	Source
Royal Tunbridge Wells	33.70	i-Tree Canopy 2016
Dover	29.20	i-Tree Canopy 2016
Winchester	27.40	i-Tree Canopy 2016
Telford	25.20	i-Tree Canopy 2016
Islington	25.00	National Tree Map Survey 2019
Birmingham	23.00	i-Tree Canopy Survey 2012
London	21.90	i-Tree Eco Project 2015
Oxford	21.40	i-Tree Canopy Survey 2015
Plymouth	18.50	i-Tree Canopy Survey 2017
Newcastle	18.10	i-Tree Canopy Survey 2018
Edinburgh	17.00	i-Tree Survey 2012
Ealing	16.90	i-Tree Survey 2018
Eastbourne	15.90	i-Tree Canopy Survey 2011
Manchester	15.50	Red Rose Forest survey 2007
Glasgow	15.00	i-Tree Survey 2014
Bristol	14.00	Bristol Tree Survey 2009
Torbay	12.00	i-Tree Survey 2011

Table 2: A selection of urban areas across the UK and their estimated canopy cover

1. Introduction

1.1 Background

Measuring tree canopy provides the means to help city planners, urban foresters and communities consider trees and forests as distinct elements of green infrastructure, as a key component of community planning, sustainability and resilience.

'Green Infrastructure is a strategically planned and delivered network comprising the broadest range of high quality green spaces and other environmental features. It should be designed and managed as a multifunctional resource capable of delivering those ecological services and quality of life benefits required by the communities it serves and needed to underpin sustainability. Its design and management should also respect and enhance the character and distinctiveness of an area with regard to habitats and landscape types.'

Green Infrastructure also encompasses river systems and coastal environments (these are sometimes referred to as Blue Infrastructure).

Green Infrastructure includes established green spaces and new sites and should thread through and surround the built environment and connect the urban area to its wider rural hinterland. Consequently it needs to be delivered at all spatial scales from sub-regional to local neighbourhood levels, accommodating both accessible natural green spaces within local communities and often much larger sites in the urban fringe and wider countryside.'

Natural England Green Infrastructure Guidance (2009).

The importance of vegetation in urban areas has long been recognised (e.g. Oke, 1982, Huang et al., 1987, Nowak et al., 2010). Amongst other benefits, vegetation provides shading, evaporative cooling and rainwater interception (Gill et al., 2007). Tree canopy cover has a strong influence on a number of factors including energy demand, air quality and noise pollution, biodiversity, ameliorating high urban summer temperatures and human health and wellbeing.

Canopy cover assessments help to observe change over time at a relatively low cost in comparison to field surveys. Quantifying tree canopy cover has been identified by many authors (Britt and Johnston, 2008; Escobedo and Nowak, 2009; Schwab, 2009) to be one of the first steps in the management of the urban forest.

There is a growing body of international research and literature which supports the theory that overall, increasing tree cover in our towns and cities provides multiple benefits at little cost. For example, a study in Torbay found that for every £1 spent on an Oak tree, £4.96 was returned in benefits, taking into account all the costs on management and maintenance, whilst only being able to value just 2 of the associated benefits (pollution removal and carbon sequestration - Sunderland et al., 2012). A similar study in New York found that for every \$1 spent on its street trees \$5 were returned in benefits (Wells, 2012).

Trees and urban tree cover are also implicitly linked to other key concepts that are emphasised and highlighted within The National Planning Policy Framework (NPPF). Sustainability, ecosystem services and green infrastructure are all dependent on the significant contribution that trees in the urban forest make. Of the 13 sections in the NPPF trees are able to contribute to meeting the objectives of 11 of them.

For example, increased tree cover can increase economic growth (Rolls and Sunderland, 2014) and prosperity as leafier environments improve consumer spending (Wolf, 2005). Additionally, businesses are prepared to pay greater ground rents associated with higher paid earners who are also more productive (Kaplan (1993), Wolf (1998), Laverne & Winson-Geideman (2003)), house prices increase and crime is reduced thereby “Building a strong, competitive economy”, (Section 1 NPPF, paragraph 18). This is also directly linked to “Ensuring the vitality of town centres” (Section 2).

A full summary of how trees benefit local communities within the context of the National Planning Policy Framework is provided in Appendix III. In addition to the above, these include:

- Supporting a prosperous rural economy
- Improving journey quality and encouraging use of alternative transport corridors
- Increasing property prices and reducing crime
- Improving the ‘liveability’ of urban areas, increasing happiness and reducing stress
- Providing habitat, increasing biodiversity and therefore recreational value

Note: Canopy cover is not to be confused with total leaf area, which seeks to estimate all of the layers within a tree canopy expressed as a volume. This is normally expressed in cubic metres (m³) or using leaf area index (LAI).

1.2 Aims and Objectives

This is a factual, evidence-based document which seeks to underpin the aspirational, ongoing aim of providing a positive argument to support policy development in favour of developing a robust, inter-connected urban forest network.

The main objective of this report is to provide a snapshot of canopy cover in the borough of Islington. It is important to be able to measure this vital component of Green Infrastructure to ensure that it will be embedded and enhanced as part of the growth agenda for the area.

The original brief was to:

- Use Bluesky National Tree Map data to calculate percentage tree canopy cover for each of the 16 wards of Islington
- Compare tree canopy cover with available ONS statistical data on Health, Crime and Deprivation.

A key area where this information is particularly relevant is in planning and development; this document has been written with an emphasis on informing local planning policy (see also Appendix III and IV). However, its purpose is not to create policy within the document itself, but to highlight the importance of the urban forest as a distinct and unique element of Green Infrastructure.

The data presented here can be used to inform tree policies and other environmental strategies, so that residents and visitors to Islington can continue to enjoy the benefits of urban trees long into the future. The information will also be useful in targeting future planting and management schemes. Tree planting, protection and maintenance as a means to increase canopy cover will be an important part of delivering equitable access to the benefits trees provide.

This study also explores any possible correlations between tree canopy cover and human health and wellbeing, by comparing canopy cover information with selected, geographically explicit data from the Office of National Statistics (ONS).

1.3 The Role of Trees in Cities

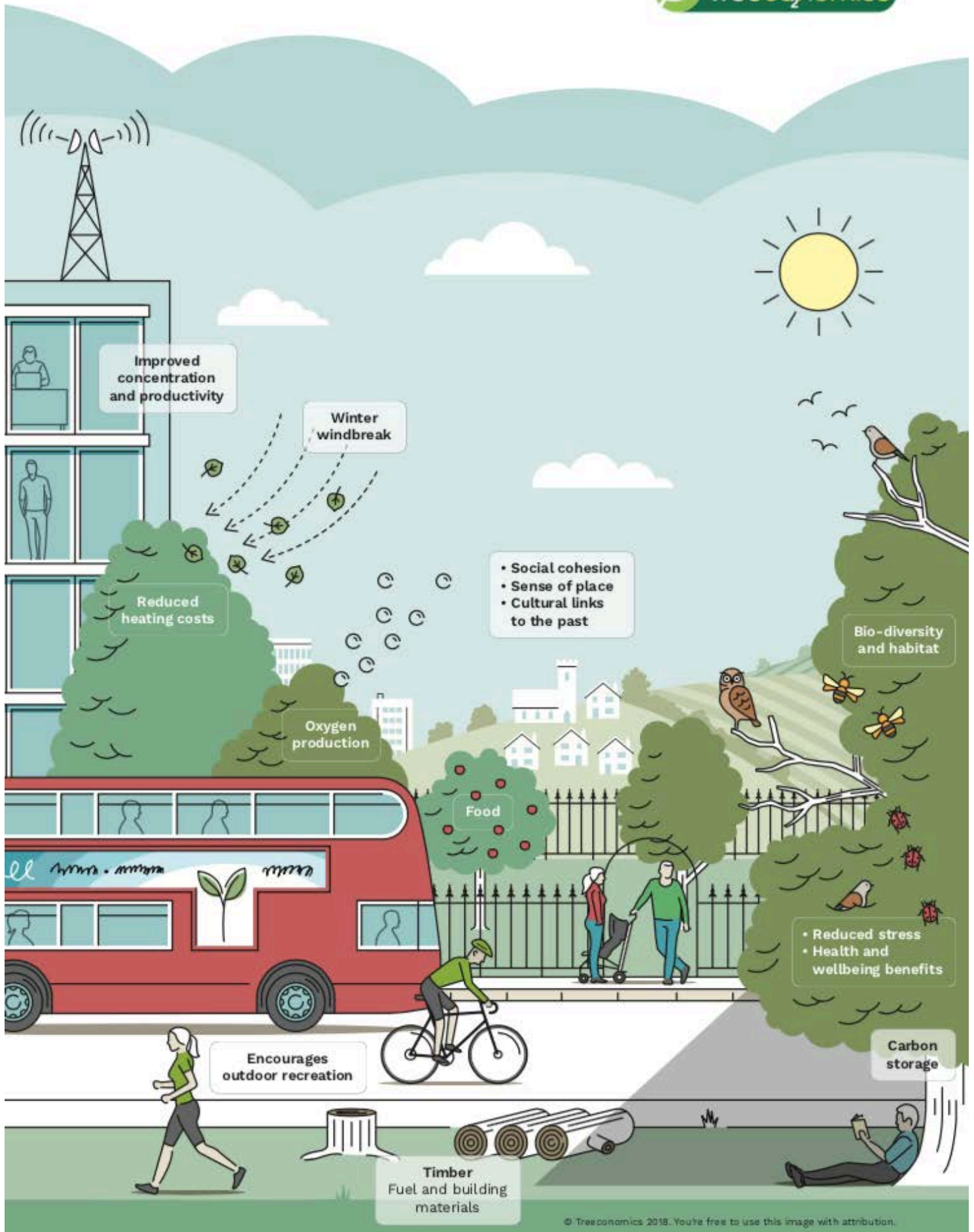
In 2014, around 54% of the world's population were living in towns and cities. That figure is set to increase to 70% by 2050 (Ekelund, 2015). In addition, it is estimated that almost two-thirds of the urban environment which will exist in 2030 is yet to be built. This suggests that the rate of urban development is set to accelerate considerably.

If we are to produce happy, healthy communities, it is paramount that we create and maintain healthy and sustainable urban environments, designed to incorporate interconnected elements of green infrastructure and urban forest to improve the liveability of the places in which people live. Figure 2, overleaf, gives an overview of the benefits and challenges of incorporating trees in urban design.

Understanding the value and extent of canopy cover in the borough of Islington will inform decisions that will improve human health and environmental quality.

In a study of 283 UK towns and cities, Doick et al. (2017) recommends a minimum canopy cover target of 20% (with 15% for coastal locations), and currently many UK cities are exceeding that. For example, London is aiming for 30% canopy cover and both Torbay and Plymouth have set goals of 20% canopy cover, whilst Bristol has set a target to double its canopy cover by 2050 from 15 to 30%. This therefore gives an indication for the potential canopy cover goals for the areas surveyed in this report.





2. Data analysis

2.1 Methodology

GIS Project boundaries of Islington, and the individual wards, were accessed using the London Datastore. Additional background mapping data was obtained from various open source web portals, referenced on the maps.

Tree canopy cover within the London borough of Islington was assessed using the Blue Sky National Tree Map. This data provides polygons of the canopy across Islington and idealised crown polygons, along with point data representing each tree. This information can be used to estimate the canopy cover percentage for the area.

Health and socio-economic data has been obtained from the Office of National Statistics (ONS) and Public Health England (PHE) official published data. Please note that there were some gaps in the House Price data.

Where the data obtained was presented at Lower Super Output Area (LSOA) level, it has been aggregated up to ward level geography. This was carried out using the 'Lower Layer Super Output Area (2011) to Ward (2018) Lookup in England and Wales' table provided by ONS.

These three datasets were combined using Geographical Information System (GIS) software to provide the maps used in this report.

3. Results

3.1 Canopy Cover

3.1.1 Average Canopy Cover

The average canopy cover across the city of Islington was calculated at 25.0%.

Canopy cover by ward is depicted in Figure 4 (overleaf).

Canopy cover values range from 13.9% in Bunhill Ward, to 36.7% in Hillrise Ward of Islington.

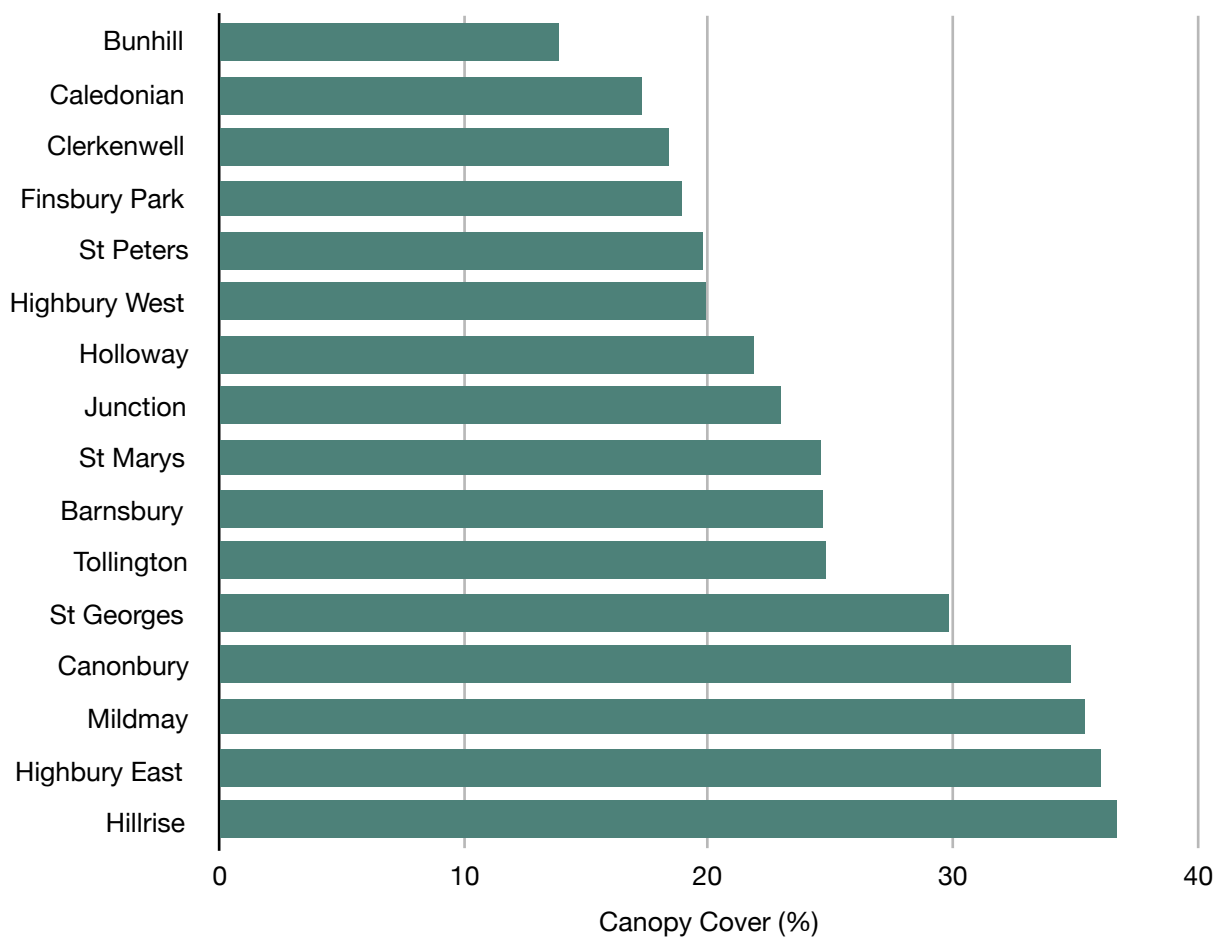


Figure 3: Canopy Cover ranked by % area per ward for Islington

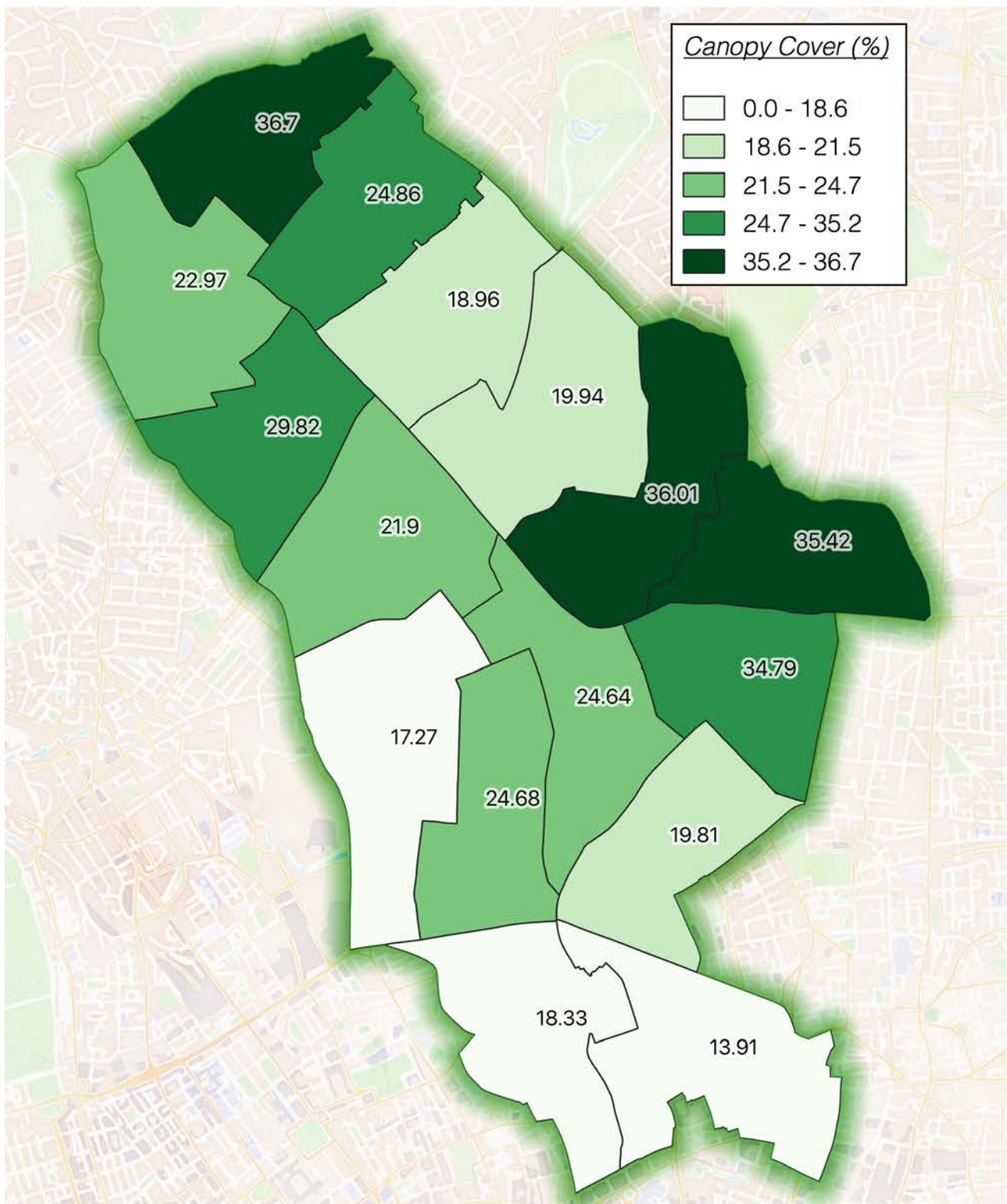


Figure 4: Map of Canopy Cover by ward

3.1.2 Canopy Cover by Ward (Individual Maps)



Figure 1: Barnsbury Ward Bluesky Canopy Cover is 25%.

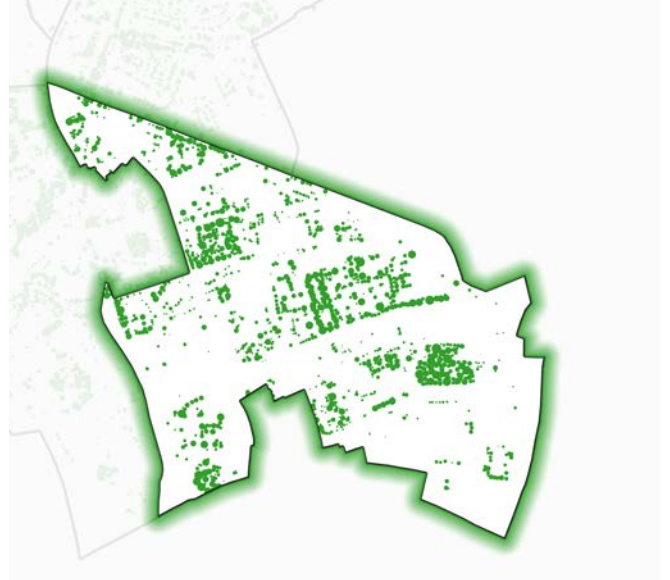


Figure 2: Bunhill Ward Bluesky Canopy Cover is 14%.



Figure 3: Caledonian Ward Bluesky Canopy Cover is 17%.



Figure 4: Canonbury Ward Bluesky Canopy Cover is 35%.

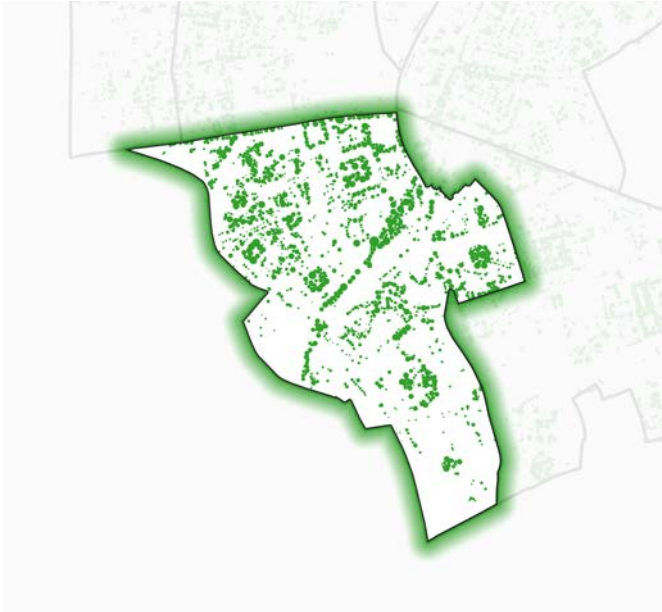


Figure 5: Clerkenwell Ward Bluesky Canopy Cover is 18%.

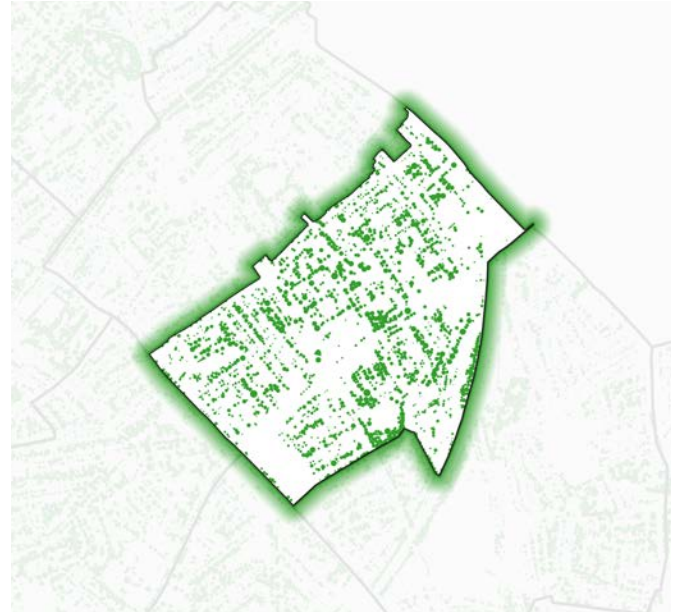


Figure 6: Finsbury Park Ward Bluesky Canopy Cover is 19%.



Figure 7: Highbury East Canopy Cover is 36%.



Figure 8: Highbury West Ward Bluesky Canopy Cover is 20%.



Figure 9: Hillrise Ward Bluesky Canopy Cover is 37%.



Figure 10: Holloway Ward Bluesky Canopy Cover is 22%.



Figure 11: Junction Ward Bluesky Canopy Cover is 23%.



Figure 12: Mildmay Bluesky Canopy Cover is 35%.



Figure 13: St Georges Ward Bluesky Canopy Cover is 30%.



Figure 14: St Marys Ward Bluesky Canopy Cover is 25%.



Figure 15: St Peters Ward Bluesky Canopy Cover is 20%.



Figure 16: Tollington Ward Bluesky Canopy Cover is 25%.

3.2 How does Islington compare to previous Canopy Cover Estimates?

Comparing canopy cover values between cities is an interesting exercise but should be made with caution as there are many attributes of a city which will affect urban forest structure and function. Furthermore, other studies have used a variety of different methods to assess canopy cover. Nonetheless, these figures can be informative in providing an approximate benchmark for Islington.

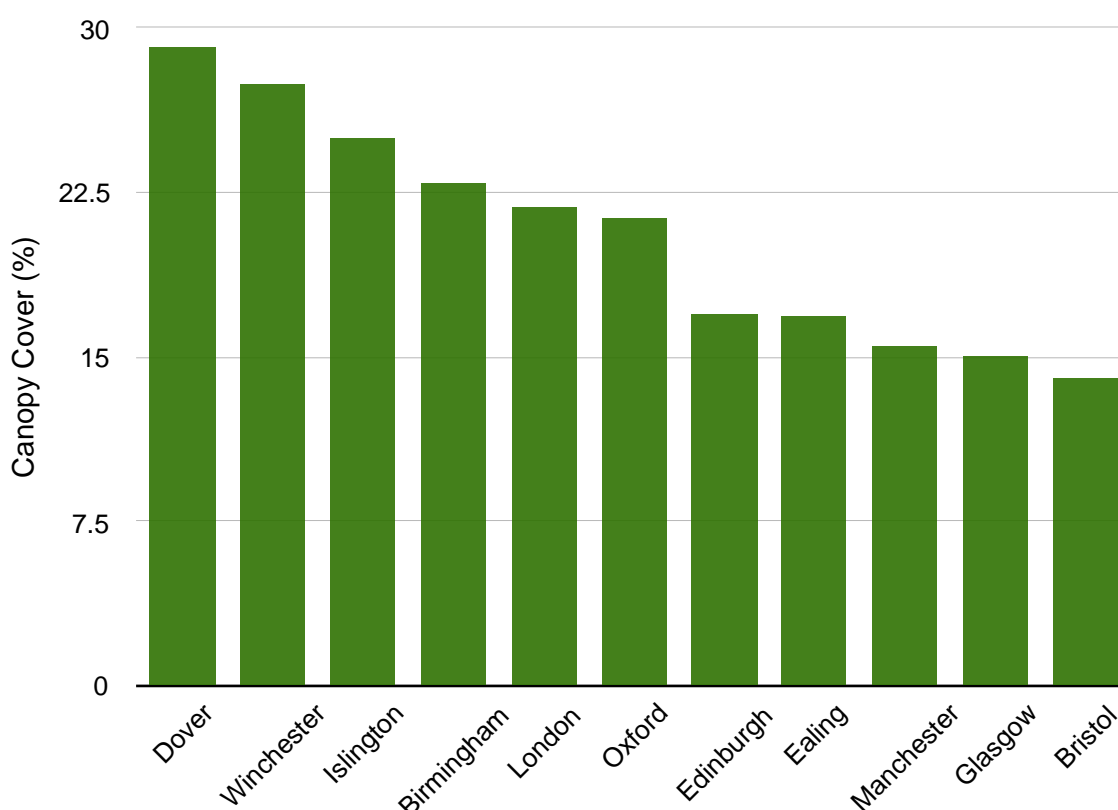


Figure 5: Canopy Cover estimates for selected UK urban areas

In comparison with other studies (Urban Tree Cover, 2018), the canopy cover is above the average (17%) estimated in the 320 towns and cities surveyed in the UK. Islington is also above the average for London, which is 21%.

4. Canopy Cover and Quality of Life

This section compares canopy cover with various quality of life indicators for Islington. These are shown for the ward level, for appropriate comparison to the canopy cover assessment. Where data was obtained at LSOA level it has been aggregated to ward level.

The information presented in the charts below does not necessarily show causations or even clear correlations, this is important to consider when analysing. However, it draws attention to the fact that areas with higher tree canopy generally perform well on other indicators (e.g. greater tree cover = less “deprived”).

The insert on each map shows the corresponding canopy cover replicated from Figure 4 (page 15).

4.1 Life Expectancy

Measuring life expectancy is increasing across the UK, and gives an indication of the health of the population. Across Islington, there are stark differences in life expectancy.

The difference between average male life expectancy between Junction and St Mary's is 6.6 years (Junction Ward having lower life expectancy). For female life expectancy, St Peter's ward presents the lowest life expectancy at 79.8 years, and St George's shows the highest with 87.2 years.

The results (see figure 8) show that in areas with higher tree canopy cover, Life Expectancy is also higher. However other socio-economic factors will also influence the result (for example higher paid families and individuals, leading healthier lifestyles in leafier environments). Yet, these results do serve to highlight that access to tree canopy cover is not always equitable and issues of environmental justice need to be considered when devising tree strategies or developing new areas for housing.

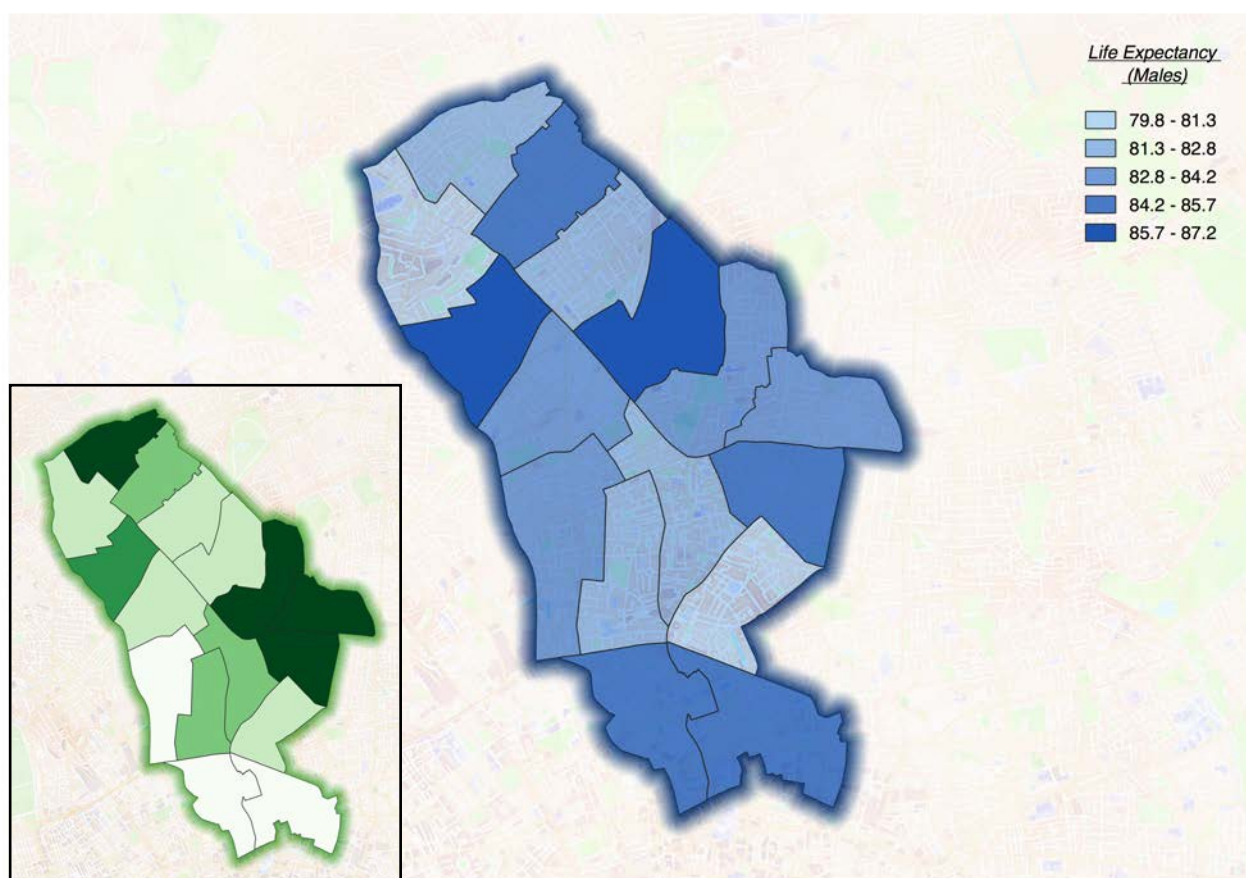


Figure 6: Life expectancy (years) for males by ward area. (Inset: Canopy Cover by ward)

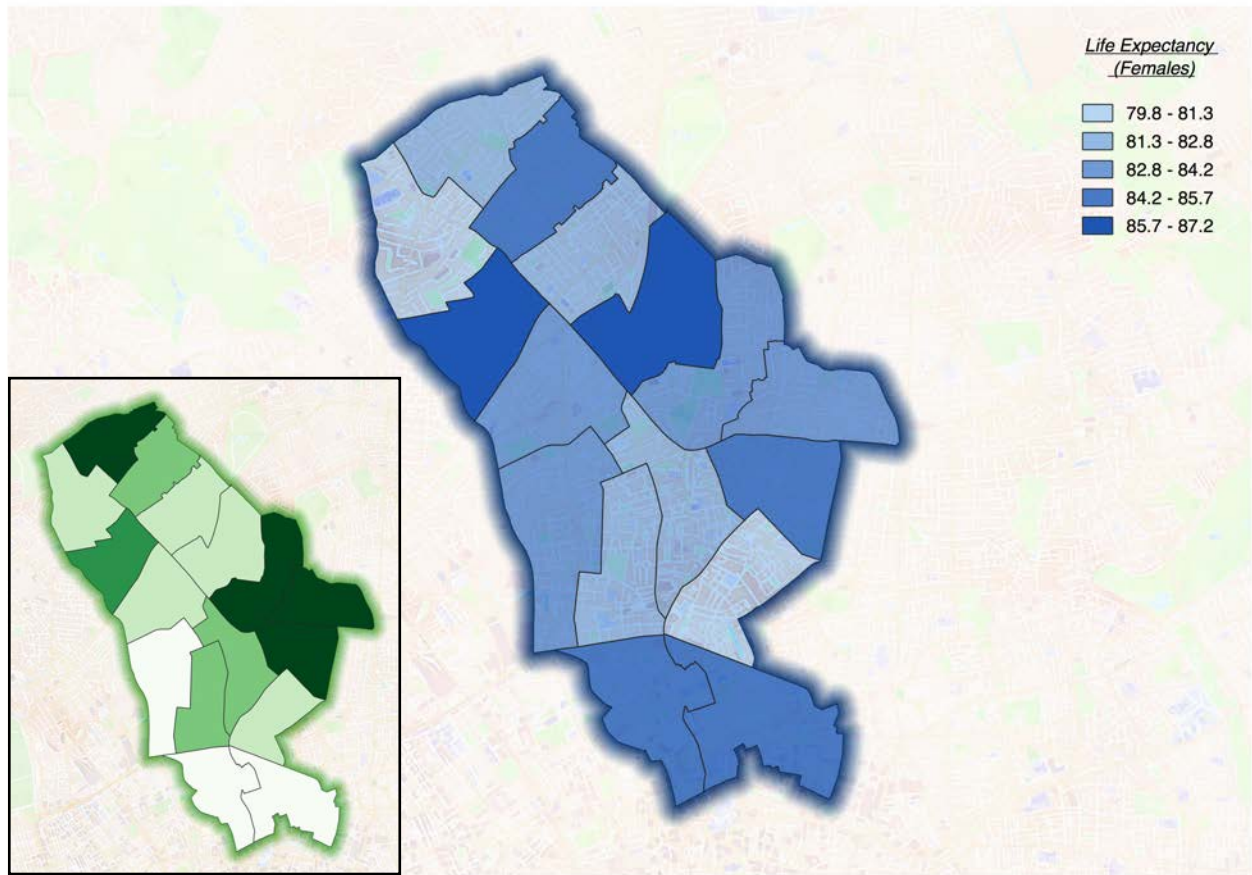


Figure 7: Life expectancy (years) for females by ward area. (Inset: Canopy Cover by ward).

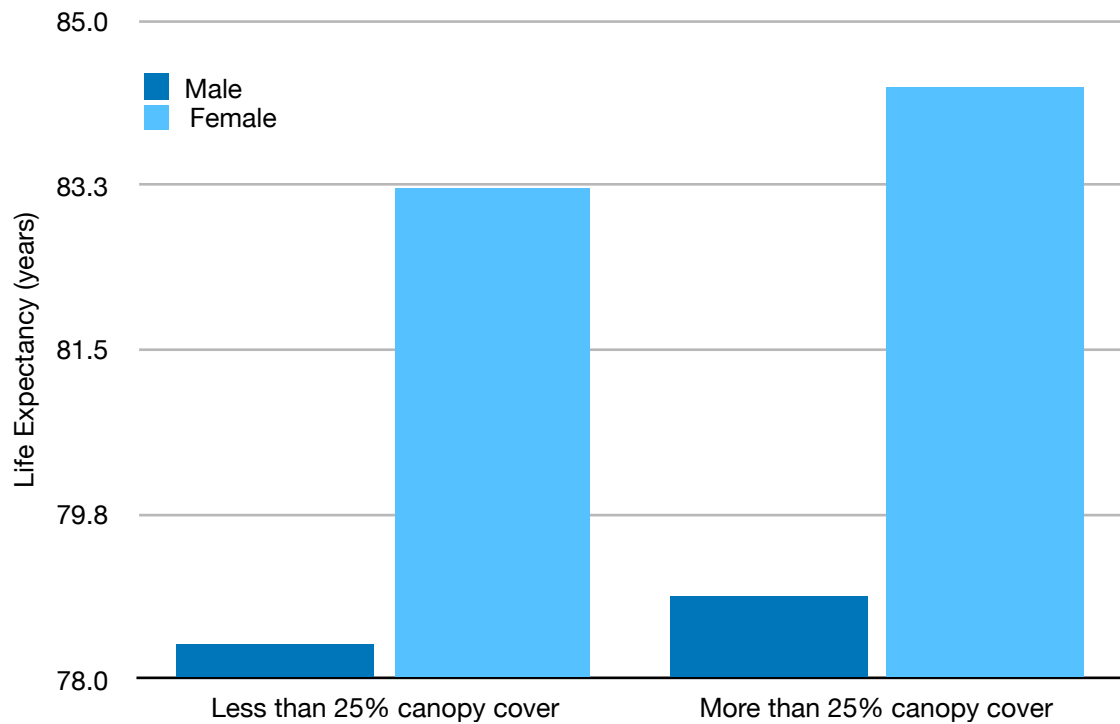


Figure 8: Healthy life expectancy and average canopy cover

4.2 Hospital Admissions

Trees help to promote healthy environments and there is a growing body of research which shows people are happier in leafier environments, with reduced levels of stress and blood pressure (Hartig, 2003).

Stress is one of the key contributing factors to mental health issues, which access to good quality green spaces can alleviate (White, 2013). Depressive disorders are now the foremost cause of disability in middle-high income countries and can be precursors to chronic health problems. In Islington, 12.6% of people aged 18 or over were recorded to have depression in 2011/12. This is significantly higher than the London average of 8.1% (NHS Islington, 2013).

Increased tree cover can help to promote good health (and therefore reduced numbers of hospital admissions) passively, by filtering air pollution and lowering peak summer temperatures, for example, and by promoting physical activity. Where green space is available it can be used for physical activity and may even help to reduce social health inequalities (Mitchell & Popham, 2008). This is important because in Europe 1 in every 15 deaths is associated with a lack of physical activity. *“Islington’s adult obesity rate is 18 per cent. This is lower than the London average (21 per cent), and the national average (24 per cent)”* (Greater London Authority, 2013).

Areas with more than 25% canopy cover, have a higher life expectancy than those with less than 25%. However, the average number of hospital admissions in relation to canopy cover do not appear to show any major differences. Interestingly, in areas with more than 25% canopy cover, the hospital admissions appear to be slightly higher.

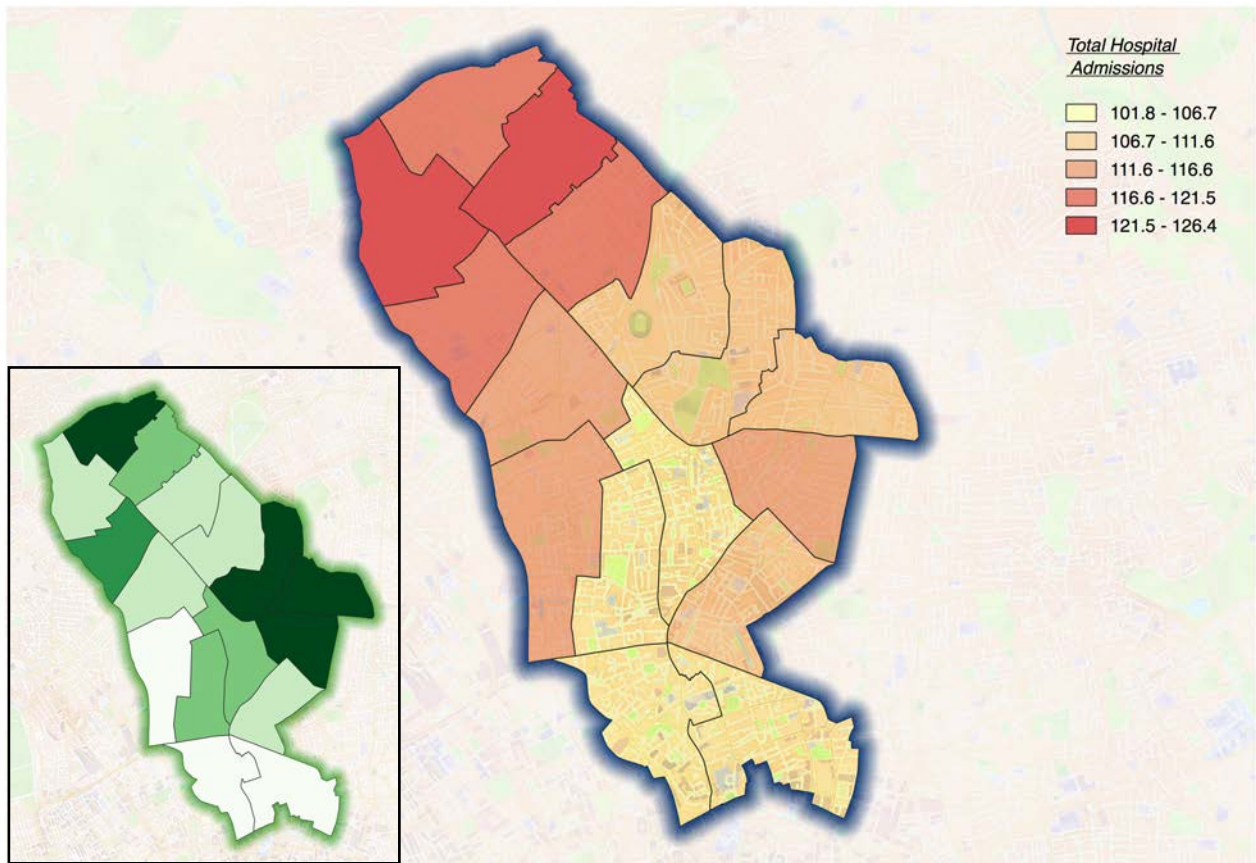


Figure 9: Total hospital admissions (emergency and elective) by Ward area. (Inset: Canopy Cover by ward).

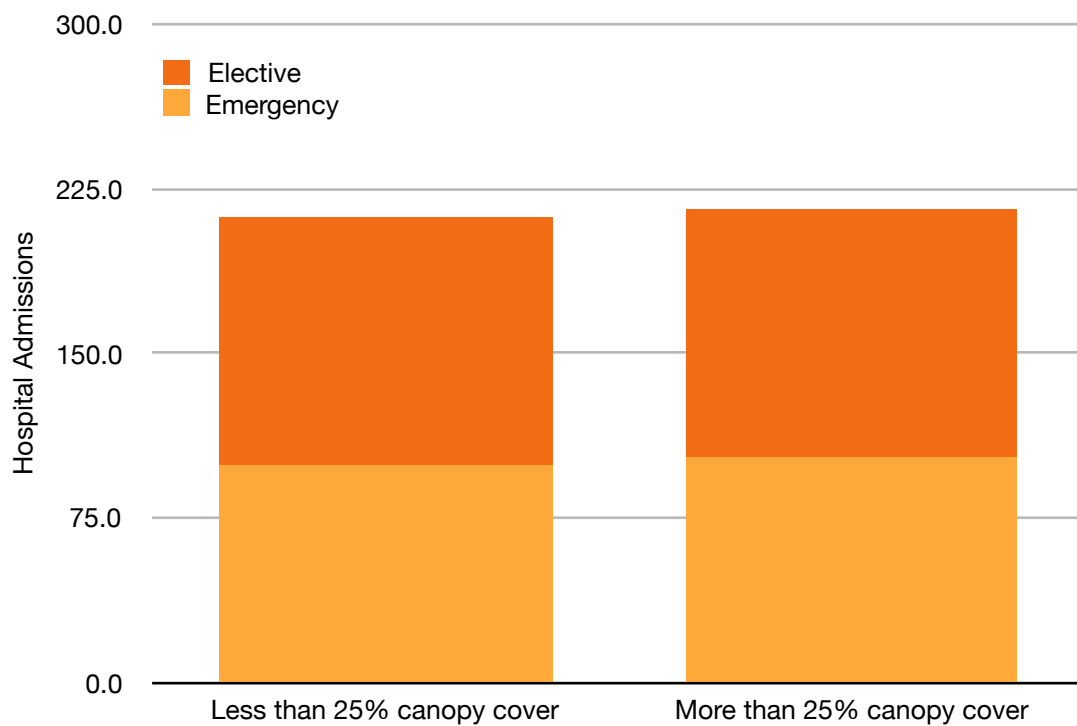


Figure 10: Hospital Admissions and average tree cover. Note that both emergency and elective admissions are included in Figure 9 above.

4.3 Index of Multiple Deprivation

Data concerning deprivation is collected at the ward scale and displayed in the following charts and figures, contrasting the wards with less than 25% canopy cover and those with a canopy cover equal or greater than 25%.

The Index of Multiple Deprivation (IMD) scores relate to a proportion of the relevant population experiencing that type of deprivation.

The scores for IMD do not relate straightforwardly to the proportion of the population experiencing deprivation. For example, an area with an IMD score of 60 is not necessarily twice as deprived as an area with a score of 30. The scores are derived from the raw data, which is why the following maps do not share a common scale.

IMD combines information from seven domains to produce an overall relative measure of deprivation.

The domains are combined using the following weights:

- Income Deprivation (22.5%)
- Employment Deprivation (22.5%)
- Education, Skills and Training Deprivation (13.5%)
- Health Deprivation and Disability (13.5%)
- Crime (9.3%)
- Barriers to Housing and Services (9.3%)
- Living Environment Deprivation (9.3%)

The weights were derived from consideration of the academic literature on poverty and deprivation, as well as the levels of robustness of the indicators. Combining information from the seven domains produces an overall relative measure of deprivation, the Index of Multiple Deprivation.

The relationship between Canopy Cover and IMD is illustrated in figures 11 and 12, below. These figures show that for IMD, on average, areas with above average canopy cover scored slightly higher (32.6) than areas with below average canopy cover (32.2).

This is contrary to the findings of most other canopy studies. However, the difference is very small and can not be said to be statistically significant.

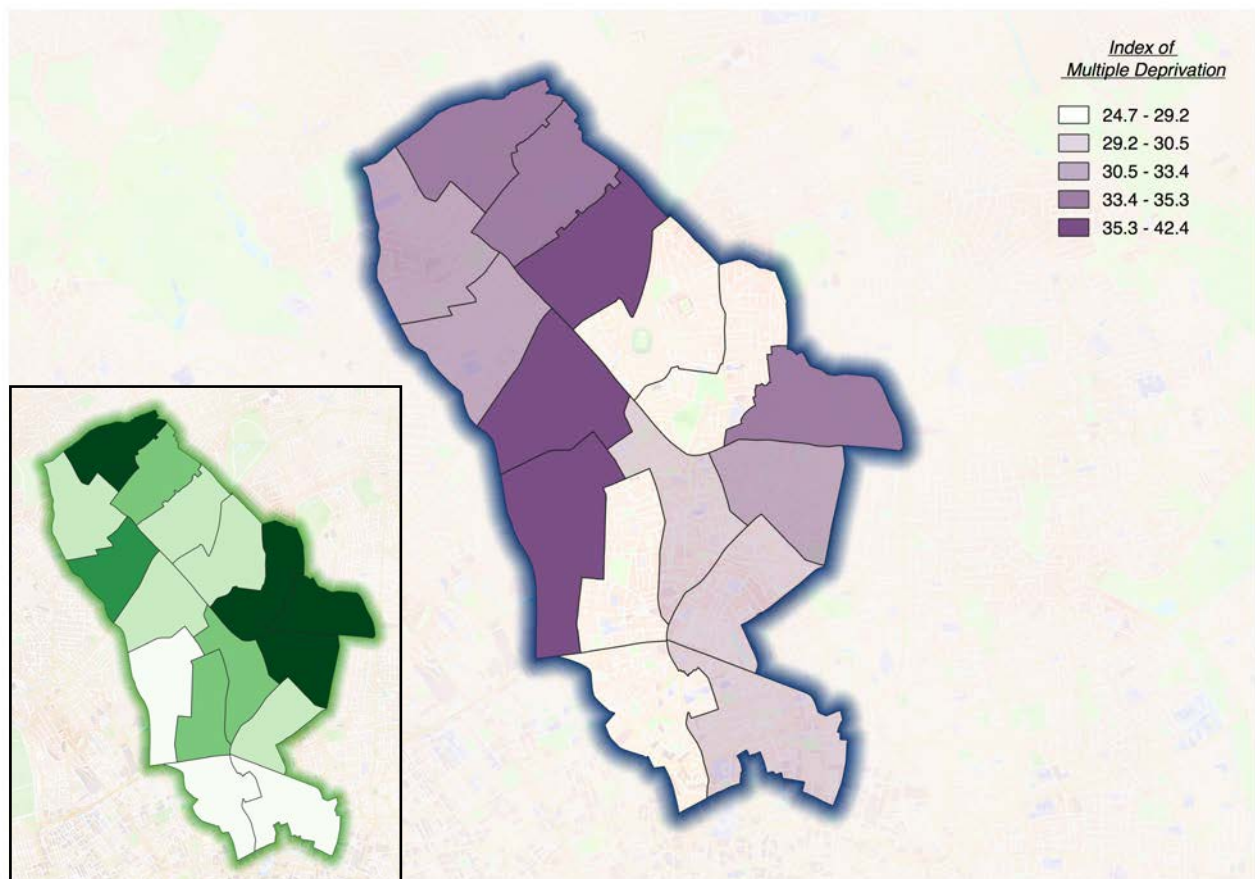


Figure 11: Index of Multiple Deprivation by Ward area. (Inset: Canopy Cover by ward).

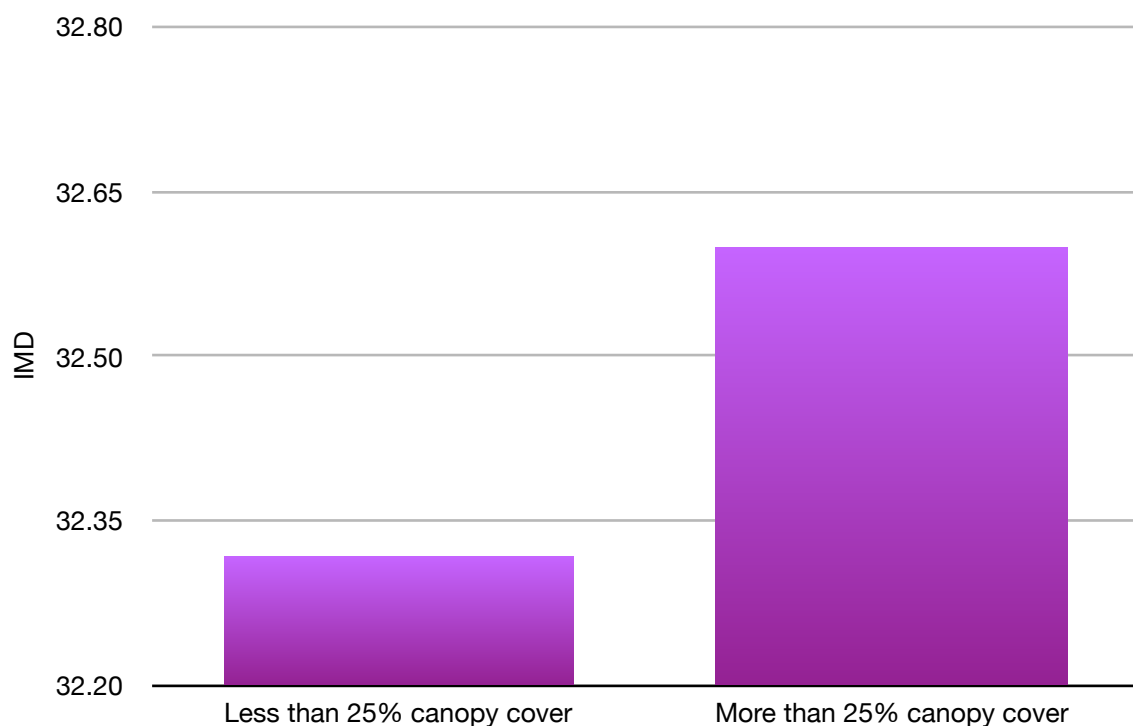


Figure 12: Index of Multiple Deprivation and average tree cover.

4.4 Crime

The crime domain measures the risk of personal and material victimisation at local level. For the purpose of this study we have taken the definition of Crime Rate to be "*Crimes per 1,000 resident people as per the latest official Census over a selected time period*" according to the UK Crime Statistics guidance (UK Crime Stats, 2011).

"*The crime rate in Islington was higher than average for the Metropolitan Police Force Area*" in 2018 ([police.uk](https://www.police.uk), 2018). There are, however variations between LSOA data output areas across a small spatial area. Separating out the relative influences of a large number of factors on the presence of crime would require a detailed analysis which is beyond the scope of this report.

Increasing tree cover can be one way to create safe and accessible environments, which are also visually attractive. However, poorly maintained areas can increase the perception of crime, studies in the US have demonstrated that a 10% increase in tree cover correlated to a 12% reduction in crime (Troy, 2012). Furthermore, among minor crimes, there is less graffiti, vandalism, and littering in outdoor spaces with natural landscapes than in comparable spaces with little green open space (Brunson, 1999). There is a positive correlation between high canopy cover and low crime rate, as shown in Figures 13 and 14 below.

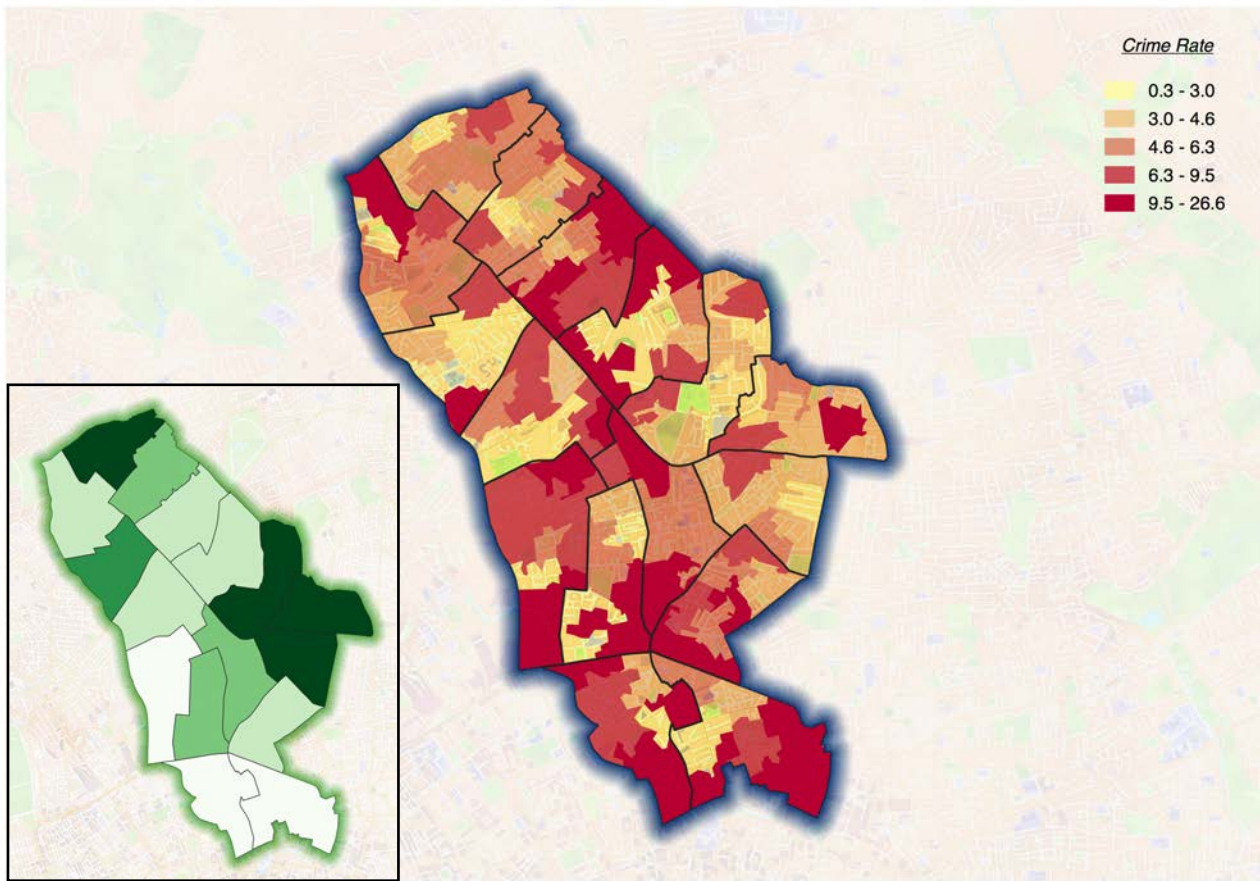


Figure 13: Crime Rate “registered crimes per 1,000 residents” (UK Crime Stats, 2011) by Ward (Inset: Canopy Cover by ward).

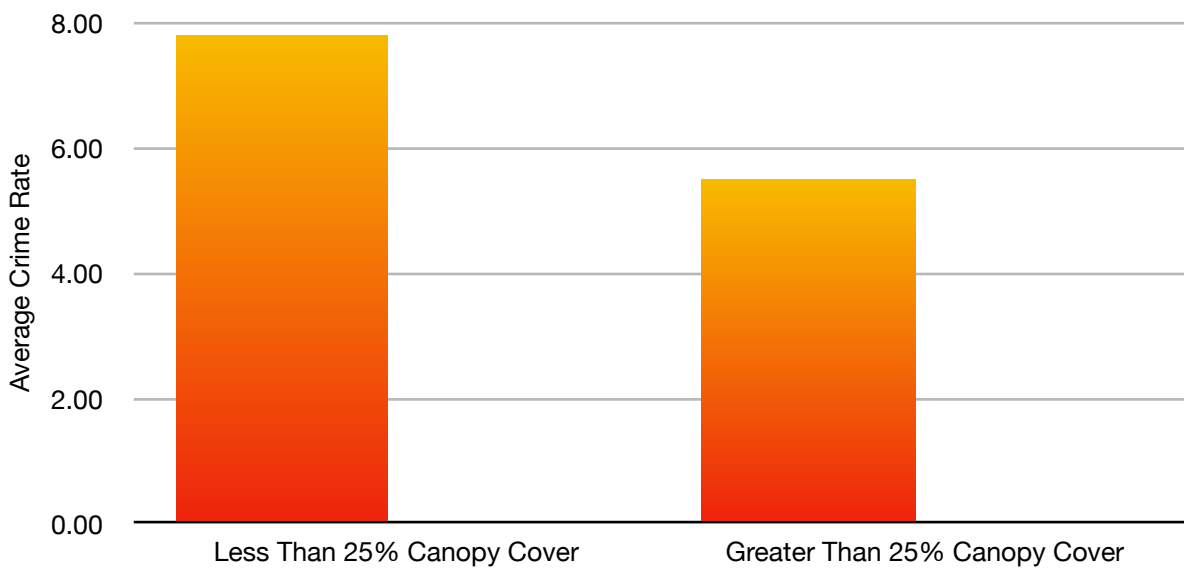


Figure 14: Crime Rate and average tree cover.

4.5 House Prices

The house price domain reports the median price paid for residential dwellings and are calculated using Land Registry data on property transactions. Please note that the House price data obtained was incomplete.

As the charts and the map in Figure 15 and 16 below, show, house prices in areas of higher canopy cover are slightly higher than those in areas of lower canopy cover.

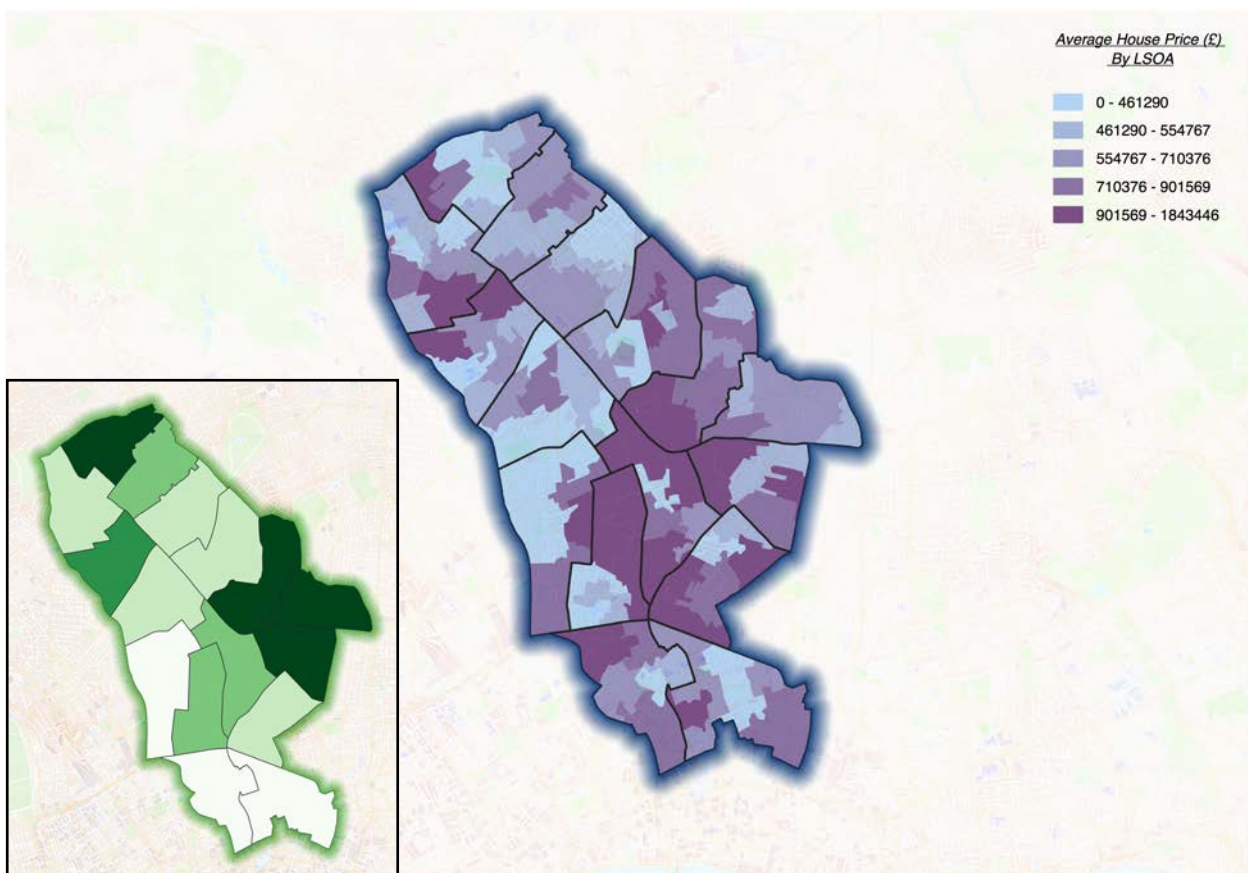


Figure 15: House Price (£) data (2018) by Ward area. (Inset: Canopy Cover by Ward).

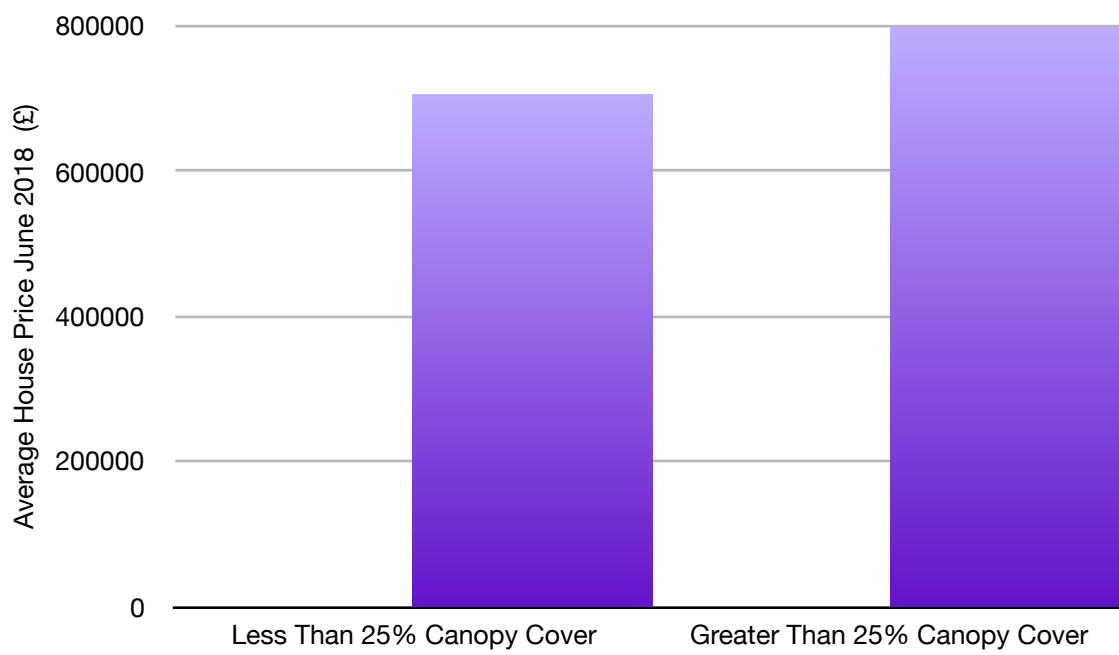


Figure 16: Average residential property price and canopy cover

4.6 Educational Achievement

Educational Achievement is reported at the ward level by the ONS. The variable used in this report is the percentage of pupils achieving five A*-C at GCSE Level. Whilst the grading system has now changed, only the historical data collected using the A*-F grading system is currently available.

The charts and map below show that between areas with less than average canopy cover and areas with more than average there is not a large difference in GCSE Attainment.

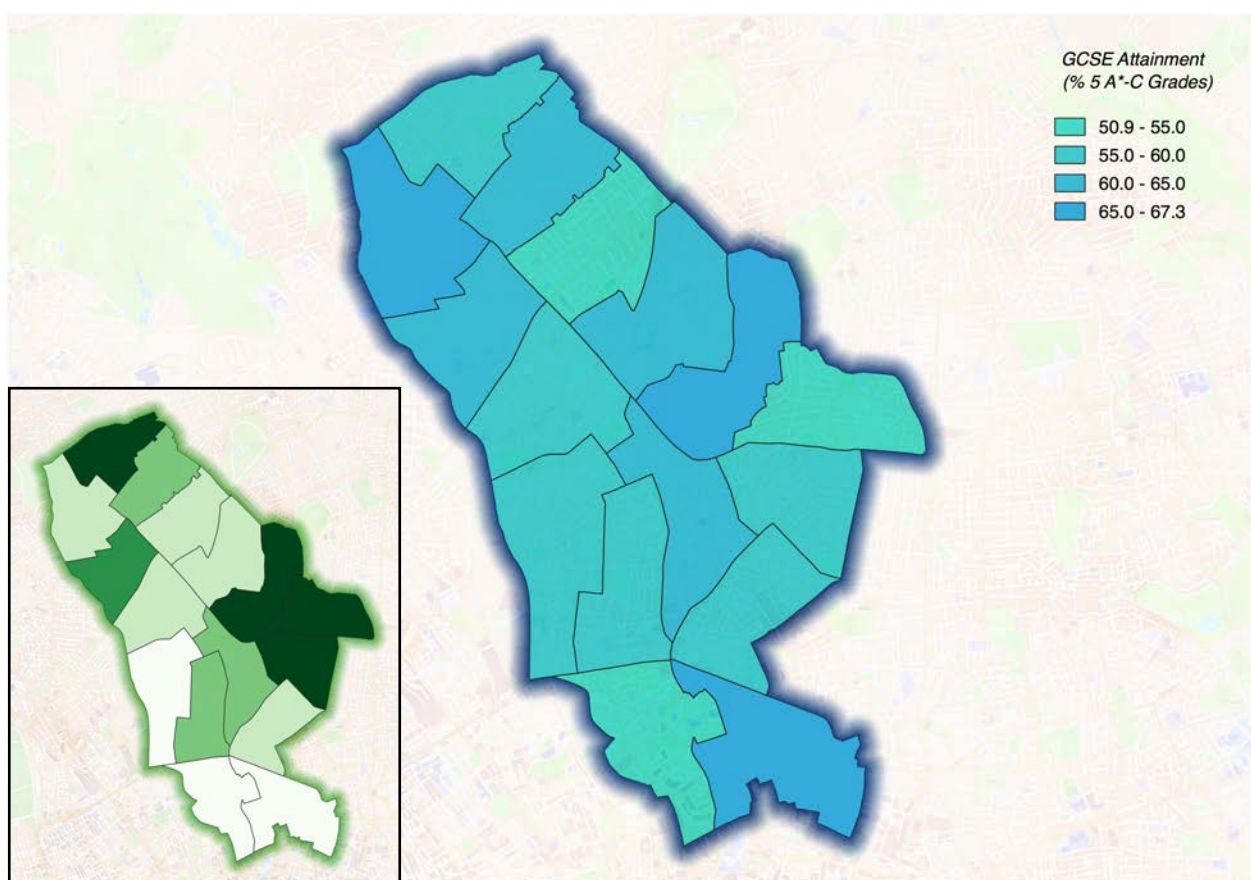


Figure 17: GCSE Attainment (% of 5 A*-C Grades) by Ward area. (Inset: Canopy Cover by Ward).

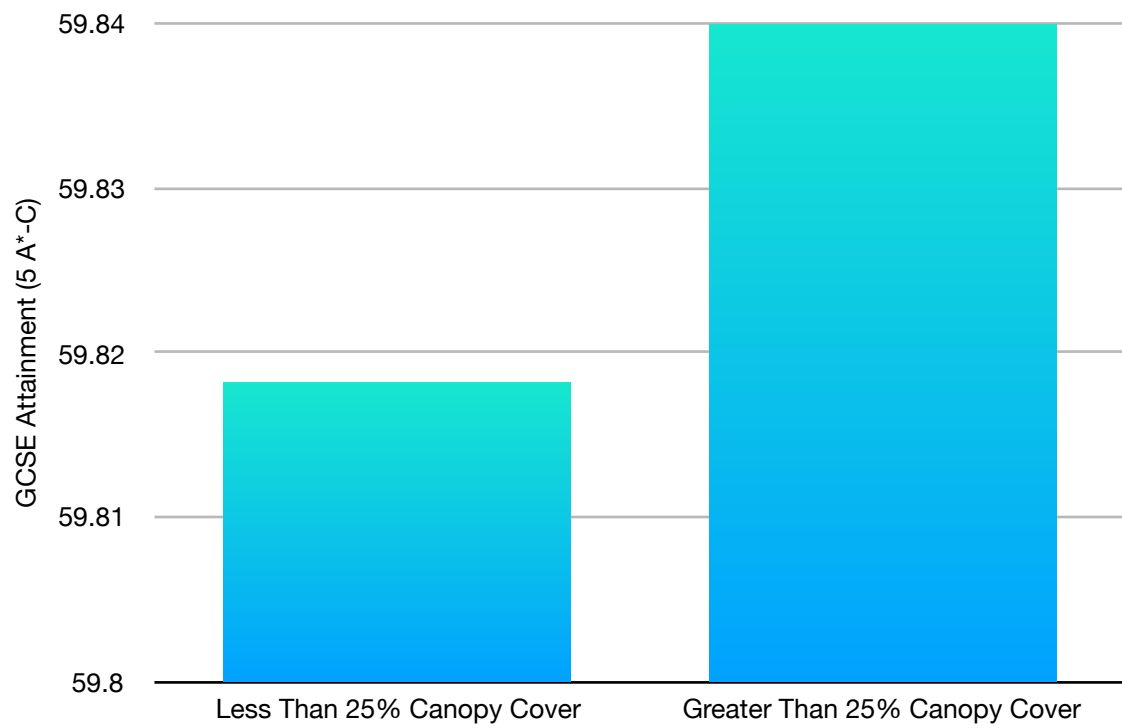


Figure 18: Number of students achieving 5 A*- C GCSE grades and canopy cover.

5. Conclusions

This preliminary study presents data on the canopy cover found in the London Borough of Islington and within its smaller administrative boundaries. It also establishes a baseline which can be used to monitor future progress, or used in further research.

Primarily however, the data collected can inform where there are opportunities to increase tree cover by highlighting areas of low tree canopy cover and the available plantable space within them. Furthermore, planting could also be targeted to the areas which also are the most deprived.

This report highlights much scientific research that supports the assertion that trees provide a wide range of valuable ecosystem services. Islington as a whole has 25.0% tree canopy cover, but within many of the most deprived areas the canopy cover is much lower, and so too is the value of ecosystem services provided.

Increasing Tree Cover in Islington will provide multiple benefits to the community and should be part of the solution in creating resilient places for people to live and work.

6. Recommendations

The following recommendations have been formulated to assist Islington Borough Council to make tree management decisions on the basis of the best available information and to ensure that resources are focused to maximise the benefits trees can provide, and that they can be targeted to areas where they are most needed.

6.1 Set a Canopy Cover Target

Many towns and cities in both this country and internationally have set a canopy cover target as a strategic objective. Typically these are in the range of 20-30% (See Appendix II).

The level of ecosystem services increases as the percentage of canopy cover increases. However, it is clear that a canopy cover needs to not only be aspirational but also achievable, taking account of local geographies, land use and industrial heritage.

Decision-makers should seek to maintain rather than increase canopy cover in the wards with the highest canopy cover, whilst seeking to maximise tree planting in the most deprived areas that also lack tree canopy cover.

It is suggested that Islington should aim to increase canopy cover to 30% by 2050, in line with the current target for Greater London.

This is a reasonable and achievable target given the timescale and available potential plantable space. However, a detailed plan to deliver this target is beyond the scope of this report.

6.2 Conduct an iTree Eco Survey

An i-Tree Eco sample survey would:

1. Provide more detailed information on the structure and composition of the urban forest such as the species present, the size and age (structural diversity) and health of the trees;
2. Inform and facilitate planning of future planting and maintenance activities to ensure that current canopy levels can at least be sustained, if not improved where appropriate;
3. Quantify and estimate the £-value the benefits trees are delivering

This comprehensive understanding of the tree population within the study area will provide a basis for evidence-led, strategic planning and management of the urban forest and associated benefits, including best practices such as:

- **Strategic management of risks** – i-Tree Eco provides information on management concerns such as tree health, diversity, infrastructure conflicts and potential impact of pests such as Asian long-horned beetle, emerald ash borer, and *chalara* dieback of ash – enabling a thorough understanding of vulnerability. This can be balanced with the understanding of benefits and value i-Tree Eco also provides, thus facilitating robust decision-making.
- **Financial planning** – The value assessment i-Tree Eco provides enables adherence to asset management good practice for financial planning – allocating resource for investment based on needs and in commensurate amount to the asset value.
- **Benchmarking and monitoring** – The figures i-Tree provide are standardised, thus making it easy to carry year-on-year comparison and to benchmark with other tree populations / areas.
- **A compelling set of key facts for advocacy** – i-Tree provides the information needed to develop strong headlines and a common language on the relevance of trees, allowing to communicate more effectively and engage new audiences.

Example 1: The impact of the i-Tree findings on tree planting in London Victoria.

In London Victoria, the i-Tree Eco study highlighted the dependence of the community on the large, mature London Plane for delivery of benefits and a tree planting strategy was commissioned to seek to improve the age, size and species structure of the tree population.

Example 2: The impact of the i-Tree findings on financial planning in Torbay.

Torbay's study revealed that the trees stored £5.1 million pounds worth of carbon and removed 50 tons of pollutants from the air every year, a service worth £1.4 million per annum. This information was crucial in making the case for trees and to secure investment for their ongoing management. In Torbay it led to an extra £25,000 to the tree planting and maintenance budget in both the year of study and in 2014.

Example 3: The impact of the i-Tree findings on public engagement in Wrexham.

In Wrexham, on the day following the release of the i-Tree Eco report and before the local authority had issued their press release, the local media got interested in the key findings and put in the limelight the value of the benefits the local trees brings to the area. Such level of interest by the local press on the positive impacts of trees had never happened before.

6.3 Produce a Plan for Trees

The Urban Forest of Islington is considered a unique attribute of the green infrastructure of the city with a variety of stakeholders which share an interest in its preservation and enhancement. To recognise its importance and uniqueness, the city would benefit from the preparation of a comprehensive tree strategy/urban forest masterplan for public and privately owned trees, which will:

1. Describe the nature and extent of the urban forest of Islington and provide a vision that is needed in the future, together with an action plan for delivery and monitoring;
2. Set individual canopy cover targets for key land uses and/or geographic areas as Key Performance Indicators which is integral to the delivery of the Local Plan;
3. Set ambitious targets for cooperative development of the Urban Forest with communities, local business, utility companies and so on;
4. Monitor canopy cover as a Key Performance Indicator for management of the urban forest;
5. Identify and prioritise action through planting and management to ensure that tree cover is maintained, sustained and improved where this is appropriate;
6. Describe the role of trees within the landscape setting of Islington;
7. Develop a set of principles, standards, policies and constraints relating to trees that can be used to guide the design, development, deployment and operation of services delivered by trees in the borough of Islington.

The i-Tree Eco survey and the Plan for Trees will be essential tools to ensure trees are an integral part of the planning system as the population grows.

6.4 Use the mapping to support future planting decisions

The canopy results presented within this report could also be used in a Multi Criteria Decision Analysis (MCDA). Such an analysis would look at opportunities to increase canopy cover in the borough of Islington. Factors such as building density (includes all artificial surfaces: roads, paths, houses, etc.), air pollution, flooding and tree canopy cover could be combined within a Geographical Information System. All these factors could then be equally weighted and combined to give an overall score. The higher the score the greater the opportunity to create woodlands and to plant trees.

At the most basic level the maps could identify areas where there is:

- a high level of deprivation;
- low canopy cover;
- room to plant more trees;

As part of this study Islington now has readily accessible and useable map files illustrating the tree canopy cover over the city. It is a straightforward and easily repeatable task to identify new planting areas at the ward level. This will help focus where to target resources for future tree planting.

6.5 Tree Canopy Cover and Development Viability

This report highlights much research which supports the assertion that trees provide a wide range of ecosystem services. Whilst the canopy cover for Islington as a whole is 25.0%, some of the more deprived areas possess much lower levels of canopy cover. Consequently, the value of ecosystem services provided by trees in these areas is much lower.

There is likely to be a limit to the level of canopy cover which would be achievable and desirable within new development. Many towns and cities in the UK have set a target for the level of canopy cover as a strategic objective. Typically these are in the range 20-30%.

A previous canopy cover study for Wycombe showed that dwelling densities of 29 - 34 / ha could be designed to accommodate projected canopy cover of 25.6 - 32%. This projection also allowed for the prevailing trend of predominantly low-rise, detached residential development. More attached housing and flatted development, for example, would allow for more communal space with increased canopy cover without sacrificing total dwelling footprint size.

Many factors will combine to influence the delivery of a desired level of future canopy cover in a development. These include:

1. Level of existing canopy cover (i.e. retention of existing trees)
 - Guidance and legislation (e.g. BS 5837: 2012 Trees in relation to design, demolition and construction - Recommendations; Town and Country Planning Act 1990 (as amended))
2. Requirements from new tree planting (i.e. mature tree canopy projection)
 - Number, size and crown shape of trees
 - Soil requirements (quality and quantity)
3. Estimated time to achieve canopy cover target
4. Design of layout to accommodate future growth
5. Success in establishing trees and achieving longevity in the landscape. (BS 8545)

Incorporating these factors into the urban forest masterplan/strategy would help to engage a variety of stakeholders, including across the departments of the planning authority. This is key to incorporating canopy cover targets into the design process of new development.

Appendix I.

Blue Sky National Tree Map Technical Notes

The National Tree Map (NTM) by Bluesky International Ltd is a commercial product which seeks to identify all trees and shrubs in England and Wales over 3m in height.

Classification of trees is achieved using stereo aerial photography (RGB/CIR), Digital elevation models (DTM/DSM) and hydrological models. The process produces three datasets: crown polygons, idealised crowns and height points. The map operates a 5 year rolling update program (NTM, 2015).



Aerial photography



Crown polygons



Idealised crowns



Height points

The National Tree Map consists of three GIS datasets:

1. Crown Polygons (Vector - Polygon) - Representing individual trees or closely grouped tree crowns
2. Idealised Crowns (Vector - Polygon) – Crown polygons visualised as circles for ease of use. Area measurement remains true to original crown feature
3. Height points (Vector - Point) - Detailing the centre point and height of each crown.

The point locations of each tree in the NTM dataset allowed each individual tree to be assigned a ward, a lower layer super output area (LSOA) and a middle layer super output area (MSOA), allowing for comparing canopy cover with other statistics from ONS.

Bluesky claims that the product captures more than 90% of all canopy coverage and within 50m of buildings greater than 95% all canopy coverage (NTM, 2015).

Appendix II

Trees in the National Policy Planning Framework

The revised National Planning Policy Framework (NPPF - July 2018) makes specific mention of trees and woodland more frequently than the document which preceded it, where trees were only mentioned in the context of *'aged or veteran trees'*. However, trees and urban tree cover are implicitly linked to other key concepts that are emphasised and highlighted within the framework.

Sustainability, ecosystem services and green infrastructure are all dependent on the significant contribution that trees in the urban forest make.

Of the 16 sections in the revised NPPF, trees are able to contribute to meeting the objectives of 11 of them.

Trees, and the benefits which they provide are crucial to securing economic, social and environmentally sustainable development - NPPF Section 2 (*"Achieving sustainable development"*). Trees contribute to positive improvements in the quality of the built and natural environment and also have a central role to play in the strategic policy making of local authorities. Paragraph 20 of the NPPF sets out how council policies must make provision for the:

"conservation and enhancement of the natural, built and historic environment, including landscapes and green infrastructure, and planning measures to address climate change mitigation and adaptation"

Increased tree cover can increase economic growth (Rolls and Sunderland, 2014) and prosperity (Wolf, 2005) as leafier environments improve consumer spending. Additionally, businesses are prepared to pay greater ground rents (Laverne & Winson-Geideman, 2003), also associated with higher paid earners who are also more productive (Kaplan, 1993; Wolf, 1998), house prices increase and crime is reduced (Wolf (2007), Kuo & Sullivan (2001a, 2001b)). This accords with NPPF (Section 6) *"Building a strong, competitive economy"* and is also directly linked to (Section 7) *"Ensuring the vitality of town centres"*. Furthermore, trees also contribute to *"Supporting a prosperous rural economy"* (included as a separate heading within Section 6 *"Building a strong, competitive economy"*), through the provision of non woody forest products, wood fuel and timber.

Trees also improve journey quality (Davies et al., 2014) (Section 9) *"Promoting sustainable transport"* and can encourage use of alternative transport corridors such as pavements and cycleways (Trees and Design Action Group, 2014). Additionally, trees near road

networks absorb pollution and airborne particulates, helping to fulfil obligations under local air quality action plans (Escobedo and Nowak, 2009), reduce noise (Van Renterghem, 2014; Van Renterghem et al., 2012) and lower traffic speeds (Mok et al., 2003).

The presence of trees helps to improve property prices thereby contributing to delivering a wide choice of high quality homes, a theme which is central to the NPPF. The incorporation of trees into new development, when done in the right way so that there is minimal conflict, will provide a positive contribution to good design. Section 12 of the NPPF *“Achieving well-designed places”* refers in many places to principles which would benefit from the careful consideration of the use of trees in development design.

Trees not only contribute to ‘attractive’ and ‘comfortable’ streetscapes (or tree-scapes) but also are an asset which appreciates, delivering even greater benefits as they grow, adding to the quality of the area during, over and above the lifetime of the development (paragraph 127). They are essential to the incorporation of ‘*green and other public space*’ (paragraph 127e) and in the ‘*provision of safe and accessible green*

infrastructure’ (paragraph 91). Local authorities must also ‘*plan positively for the provision and use of shared spaces, community facilities...*’ (paragraph 92), which includes the provision of public open space. Increases in tree cover have even been shown to reduce crime therefore helping to ensure places are ‘*safe and accessible*’ (paragraph 91).

Trees help in delivering the requirements of Section 8 *“Promoting healthy and safe communities”*. There is a growing body of research that shows people are happier in leafier environments and with access to the natural environment: hospital recovery times (Ulrich, 1984) and stress (Korpela et al., 2008; Hauru et al., 2012) are reduced and birth weights are increased (Donovan et al., 2011), meaning fewer health issues later in life. Conversely, when tree cover is reduced asthma rates and respiratory problems often increase. Trees thereby promote healthy communities. They also provide a cultural link to the wider environment (paragraph 172) and act as a focal point for shared space and can improve the provision of high quality open space (paragraph 96).

In *“Protecting Greenbelt”* (Section 13) trees are also key to enhancing biodiversity and providing places of recreation (paragraph 141). Trees are also fundamental to strategies which aim to help *“Meet the challenge of climate change, flooding and coastal change”* (Section 14). Trees reduce stormwater runoff by attenuating precipitation in their canopies (Thomas and Nisbet, 2007; Nisbet and Thomas, 2006) and also reduce peak summer temperatures. Temperatures in both the urban and wider environment by several degrees (Doick and Hutchings, 2012), thereby helping to:

'...shape places in ways that contribute to radical reductions in greenhouse gas emissions, minimise vulnerability and improve resilience; encourage the reuse of existing resources, including the conversion of existing buildings; and support renewable and low carbon energy and associated infrastructure' (paragraph 148).

Additionally, *"Plans should take a proactive approach to mitigating and adapting to climate change, taking into account the long-term implications for flood risk, coastal change, water supply, biodiversity and landscapes, and the risk of overheating from rising temperatures⁴⁸. Policies should support appropriate measures to ensure the future resilience of communities and infrastructure to climate change impacts"* (Paragraph 149).

New development should be planned to avoid increased vulnerability to the range of impacts arising from climate change. When new development is brought forward in areas which are vulnerable, care should be taken to ensure that risks can be managed through suitable adaptation measures, including through the planning of green infrastructure (GI) - this means trees, often the single largest component of GI.

Perhaps most commonly understood are trees' ability to *"Conserve and enhance the natural environment"* (Section 15). Specifically, in Paragraph 170 of the NPPF it states that *"Planning policies and decisions should contribute to and enhance the natural and local environment..." "...recognising the intrinsic character and beauty of the countryside, and the wider benefits from natural capital and ecosystem services – including the economic and other benefits of the best and most versatile agricultural land, and of trees and woodland"* (Paragraph 170 b).

A key reason for using tree canopy cover as a tool to maintain and enhance tree cover across Central Bedfordshire and within individual developments is that it offers a means by which improvements and "development whose primary objective is to conserve or enhance biodiversity should be supported; while opportunities to incorporate biodiversity improvements in and around developments should be encouraged, especially where this can secure measurable net gains for biodiversity (Paragraph 175)". Measuring canopy cover provides a means by which net change in habitat and biodiversity can be monitored.

As well as providing economic benefit, previously planted trees provide a cultural link to the past (Section 16) *"Conserving and enhancing the historic environment"* and protecting and enhancing valued landscapes. Old mature and veteran trees that have cultural significance will require more than just the consideration of their habitat and biodiversity and amenity value.

The Government attaches great importance to the design of the built environment. Trees make a significant contribution to good design and good design is a key aspect of sustainable development, is indivisible from good planning, and should contribute positively to making places better for people.

Regardless of any other 'external drivers', under the current legislation (TCPA Act 1990), LPAs have a statutory duty to consider the protection and planting of trees when granting planning permission for proposed development. The potential effect of development on trees, whether statutorily protected (e.g. by a tree preservation order or by their inclusion within a conservation area) or not, is a material consideration that must be taken into account when considering planning applications. In order to exercise that duty adequately, LPAs need to have an understanding of the existing tree resource so that they can make an informed judgement about what might be needed/appropriate, in terms of tree impact, from developments.

Appendix IV

Summary of Ecosystem Services Provided by Trees

Provisioning services

Food provision

Urban forests are regarded primarily as service providers rather than as sources of goods, however, trees and woodlands provide humans with food resources both directly (e.g. fruits, berries and nuts that are produced by the trees themselves) and indirectly (e.g. mushrooms and deer that reside in woodland habitats).

Fuel provision (woodfuel)

Woody biomass is the accumulated mass, above and below ground, of the roots, wood, bark, and leaves of living and dead trees and woody shrubs. Through the processes of harvesting and combustion, woody biomass can be used as a source of heat, electricity, biofuel and biochemicals.

Wood provision

Trees can provide timber for construction, veneers and flooring, as well as wood chip and pulp for boards and paper.

Habitat provision

Trees provide unique ecological niches for a variety of wildlife. This in turn adds to the biodiversity of the local environment and increases the enjoyment and attractiveness of an area for locals and visitors alike, thus increasing economic opportunities.

Regulating services

Carbon sequestration and storage

Trees act as a sink for carbon dioxide (CO₂) by fixing carbon during photosynthesis and storing excess carbon as biomass. CO₂ sequestration refers to the annual rate of CO₂ storage in above- and below-ground biomass. Increasing the number of trees can therefore slow the accumulation of atmospheric carbon, a contributor to climate change.

Temperature regulation

Trees are not only good reflectors of short-wave radiation, but their canopies also shade low albedo surfaces that would otherwise absorb such radiation, reducing surface temperatures and convective heat. Trees also reduce warming of the local environment through the process of evapo-transpiration where the evaporation of water from leaf surfaces, solar energy is converted into latent rather than sensible heat, thus 'cooling' the surrounding air and improving human thermal comfort.

Stormwater regulation

Urban trees and woodlands regulate stormwater by intercepting and storing rainfall on their leaves, which either subsequently evaporates, or reaches the groundwater more slowly through gradual release as through-fall. Trees also improve infiltration into the soil by channelling water onto pervious surfaces around the trunk, and through the soil along root channels.

Air purification

Trees remove air pollutants from the atmosphere mainly through dry deposition, a mechanism by which gaseous and particulate pollutants are captured and transported to plants that absorb them through their leaves, branches and stems.

Noise mitigation

Urban areas can be a source of unwanted sound, for example road noise. Trees can mitigate urban noise through the scattering and absorption of (typically mid to high frequency) sound waves by the leaves, branches and trunks, thus obstructing the pathway between the noise and the receiver.

Cultural services

Health

By providing a setting where the activities can take place, the urban forest can support physical activities such as walking, running and cycling, and relaxing activities such as bird watching, reading or having a picnic; thus encouraging physical well-being, mental restoration, escape and freedom, and enjoyment and fun.

Nature / landscape connections

Benefits arise from visual aspects of an ecosystem, e.g. trees and woodland can obscure unsightly structures, as well as other senses such as the smell of honeysuckle or the sound of birdsong. People can gain a sense of place from their local or favourite

woodland, whilst physical interactions with trees such as fruit picking or conservation volunteering can add to feelings of connection with nature.

Social development and connections

Activities undertaken within woodlands and parks can strengthen existing social relationships, while organised activities within treed environments can create the opportunity for new relationships, including people's involvement with volunteer groups and community forests (known as social capital).

Education and learning

This category includes personal development for people of all ages, gained through informal learning, such as parents teaching their children tree names or where wood and paper comes from, and formal education via approaches such as Forest School (O'Brien, 2009). Learning can also take place through activities such as volunteering, apprenticeships, and play for children.

Economy and cultural significance

The urban forest can contribute to the economy by encouraging inward investment, boosting tourism, providing a setting for recreation industries such as climbing and paintballing, and by enabling environmental cost savings (EFTEC, 2013). The urban forest can also contribute directly to the economy through the generation of new employment, such as arboricultural consultants and tree surgeons, and to a lesser extent, through the provision of food, fuel or wood products.

Bibliography

Britt, C., Johnston, M. (2008). Trees in Towns II – A new survey of urban trees in England and their condition and management. Department for Communities and Local Government, London.

Brunson, L. 1999. Resident Appropriation of Defensible Space in Public Housing: Implications for Safety and Community. Unpublished Doctoral Dissertation, University of Illinois, Champaign-Urbana, IL.

Crompton, J.L. (2001a). The impact of parks on property values: A review of the empirical evidence. *Journal of Leisure Research* 33 (1), pp. 1-31.

Crompton, J.L. (2001b). Parks and economic development. PAS Report No. 502. American Planning Association, Chicago, Illinois.

Davies, H., Image, M., Calrow, L., Foulkes, C., Frandsen, M., Duigan, M. (2014). Review of literature - how transport's soft estate has enhanced green infrastructure, ecosystem services, and transport resilience in the EU. Natural England Commissioned Reports, Number 169 (NERC 169). London, UK: Natural England.

Davies, H.J., Doick, K.J., Handley, P., O'Brien, L., Wilson, J. (2016). Delivery of Ecosystem Services by Urban Forests. Forestry Commission Research Report. In press, Edinburgh.

Department for Environment, Food and Rural Affairs (2013). Government forestry and woodlands policy statement https://assets.publishing.service.gov.uk/government/uploads/system/uploads/attachment_data/file/221023/pb13871-forestry-policy-statement.pdf

Doick, K., Hutchings, T. (2012). Air temperature regulation by urban trees and green infrastructure. FCRN012 Forest Research.

Donovan, G.H., Michael, Y.L., Butry, D.T., Sullivan, A.D., Chase, J.M. (2011). Urban trees and the risk of poor birth outcomes. *Health & Place* 17 (1), pp. 390-93.

Ekelund, U (2015). *The American Journal of Clinical Nutrition*.

EFTEC (2013). Green infrastructure's contribution to economic growth: a review. Report for Defra and Natural England, London.

Escobedo, F., Nowak, D (2009). Spatial heterogeneity and air pollution removal by an urban forest. *Landscape and Urban Planning*, 90 (3-4) pp. 102-110. Gill, S., Handley, A., Ennos, A., Paulett, S. (2007). Adapting cities for climate change: the role of green infrastructure. *Built Environment*, 33 (1), pp. 115-133.

Greater London Authority (2013). Better Environment, Better Health. A GLA guide for London's Boroughs London Borough of Islington. https://www.london.gov.uk/sites/default/files/gla_migrate_files_destination/Better%20Environment%2C%20Better%20Health%20%28Islington%2C%20311013%29.docx081113.docxAF.pdf

Hammer, T.R., Coughlin, R.E., Horn, E.T. (1974). The effect of a large park on real estate value. *Journal of the American Institute of Planners*, 40, pp. 274-277.

Handley, P., Doick, K. (2015). Compatibility and suitability of key datasets for mapping urban forests in the UK. Forest Research Internal Report.

Hardie, I., Nickerson, C. (2004). The effect of a forest conservation regulation on the value of subdivisions in Maryland. WP 03-01 (Revised). Department of Agricultural and Resource Economics, University of Maryland, College Park.

Hartig (2003). Tracking restoration in natural and urban field settings. *Journal of Environmental Psychology*, 23, 109-123.

Hauru, K., Lehtväävirta, S., Korpela, K., Kotze, D.J. (2012). Closure of view to the urban matrix has positive effects on perceived restorativeness in urban forests in Helsinki, Finland. *Landscape and Urban Planning*, 107, pp. 361-69.

Hirabayashi, S. (2012). i-Tree Eco Precipitation Interception Model Descriptions, http://www.itreetools.org/eco/resources/iTree_Eco_Precipitation_Interception_Model_Descriptions_V1_2.pdf

Huang, Y.J., Akbari, H., Taha, H., and Rosenfeld, A.H. (1987). The potential of vegetation in reducing summer cooling loads on residential buildings. *Journal of Climate and Applied Meteorology*, 26, pp. 1103-1116.

Kaplan, R. (1993). The role of nature in the work- place, *Landscape and Urban Planning*, 26.

Korpela, K.M., Ylén, M., Tyrväinen, L., Silvennoinen, H. (2008). Determinants of restorative experiences in everyday favorite places. *Health & Place*, 14 (4) pp. 636-652.

Kuo, F.E., Sullivan, W.C. (2001). Aggression and violence in the inner city: Effects of environment via mental fatigue. *Environment and Behavior* 33 (4) pp. 543-571.

Kuo, F.E., Sullivan, W.C. (2001). Environment and crime in the inner city: Does vegetation reduce crime? *Environment and Behavior* 33 (3), pp. 343-367.

Laverne, R.J., Winson-Geideman, K. (2003). The Influence of Trees and Landscaping on Rental Rates at Office Buildings. *Journal of Arboriculture* 29(5), pp. 281-290.

Lovasi, G. S., Quinn, J. W., Neckerman, K. M., Perzanowski, M. S., Rundle, A. (2008). Children living in areas with more street trees have lower asthma prevalence. *Journal of Epidemiology and Community Health* 62 (7), pp. 647-649.

Mcdonald, A., Bealey, W., Fowler, D., Dragosits, U., Skiba, U., Smith, R., Donovan, R., Brett, H., Hewitt, C. And Nemitz, E. (2007). Quantifying the effect of urban tree planting on concentrations and depositions of PM10 in two urban conurbations. *Atmospheric Environment* 41, pp. 8455-8467.

McPherson, E. G., Simpson, J.R., Xiao, Q., Wu, C. (1998). Los Angeles 1-Million Tree Canopy Cover Assessment. Davis: United States Department of Agriculture.

Mok, J.-H., Landphair, H.C., Naderi, J.R. (2003). Comparison of safety performance of urban streets before and after landscape improvements. *Proceedings of the 2nd Urban Street Symposium* (Anaheim, California). Transportation Research Board, Washington DC.

More, T.A., Stevens, T.H., Allen, P.G. (1988). Valuation of Urban Parks. *Landscape and Urban Planning*, 15, pp. 139-152.

- Nisbet, T. R., Thomas, H. (2006). The role of wood- land in flood control – a landscape perspective. In 'Water and the landscape: the landscape ecology of freshwater ecosystems'. Proceedings of the 14th Annual IALE(UK) Conference, Eds B. Davies & S. Thompson, pp. 118-125. IALE(UK), Oxford.
- Nowak, D. (1995). Trees pollute? A "TREE" explains it all. In: Proceedings of the 7th National Urban Forestry Conference. Washington, DC: American Forests, pp. 28-30.
- Nowak, D. (2000). The interactions between urban forests and global climate change. In: Abdollahi, K. K., Ning, Z. H., and Appeaning, A. (Eds). Global Climate Change and the Urban Forest. Baton Rouge: GCRCC and Franklin Press, pp. 31-44.
- Nowak, D., Civerolo, K., Rao, S., Sistla, G., Luley, C., Crane, D. (2000). A modelling study of the impact of trees on ozone. *Atmospheric Environment* 34, pp. 1601-1613. Nowak, D., Crane, D., Stevens, J. (2006). Air pollution removal by urban trees and shrubs in the United States. *Urban Forestry and Urban Greening* 4, pp. 115-123.
- Nowak, D., Dwyer J. F. (2007). Understanding the benefits and costs of urban forest ecosystems. In: Kuser, J. (ed.) *Urban and Community Forestry in the Northeast*. New York: Springer, pp. 25-46.
- Mitchell, R., Popham, F. (2008). Effect of exposure to natural environment on health inequalities. *The Lancet*, 372.
- Nowak, D., Hoehn, R., Crane, D., Stevens, J., Leblanc F. (2010). Assessing urban forest effects and values, Chicago's urban forest. Resource bulletin NRS-37. USDA Forest Service, Radnor, PA.
- NTM. (2015) National Tree Map (NTM) website. Available from: <http://www.bluesky-world.com/#!national-tree-map/c1pqz> PH[Accessed 15 September 2015].
- Office for National Statistics. 2016-based Sub-National Population Projections for Local Authorities [online] available at <https://www.ons.gov.uk/peoplepopulationandcommunity/populationandmigration/populationprojections/datasets/localauthoritiesinenglandtable2> [accessed 10 July 2018] (used under Open Government Licence v3.0)
- O'Brien, E. (2009) Learning outdoors: the Forest School approach. *Education* 3-13, 37, pp. 45-60.
- Oke, T.R. (1982). The energetic basis of the urban heat island. *Quarterly Journal of the Royal Meteorological Society*, 108, pp. 1-24.
- Peachey, C. Sinnett, D., Wilkinson, M., Morgan, G.W., Freer-Smith, P.H., Hutchings, T.R. (2009). Deposition and solubility of airborne metals to four plant species grown at varying distances from two heavily trafficked roads in London. *Environmental Pollution* 157, pp. 2291-2299.
- [police.uk](https://www.police.uk) (2018) Crime in Islington compared with crime in other similar areas [online] <https://www.police.uk/metropolitan/00AU01T/performance/compare-your-area/>
- Public Health England, Public Health England 2014-2016 statistics [online] <https://fingertips.phe.org.uk/profile/health-profiles/data#page/1/gid/1938132696/pat/6/par/E12000001/ati/102/are/E08000021>
- Rolls, S. & Sunderland, T. (2014). Microeconomic Evidence for the Benefits of Investment in the Environment 2 (MEBIE2). Natural England Research Reports, Number 057.

- Rogers, K., Sacre, K., Goodenough, J., Doick, K. Valuing London's Urban Forest. *Treeconomics* 2015.
- Schwab, J. (2009) *Planning the Urban Forest: Ecology, Economy, and Community Development*. USDA Forest Service, NewYork.
- Seila, A.F., Anderson, L.M. (1982). Estimating costs of tree preservation on residential lots. *Journal of Arboriculture*, 8, pp. 182-185.
- Sunderland, T., Rogers, K., Coish, N (2012). What proportion of the costs of urban trees can be justified by the carbon sequestration and air-quality benefits they provide? *Arboricultural Journal*, 1-21.
- Thomas, H., Nisbet, T.R. (2007). An assessment of the impact of floodplain woodland on flood flows. *Water and Environment Journal*, 21, pp. 114–126.
- Tiwary, A., Sinnet, D., Peachey, C., Chalabi, Z., Vardoulakis, S., Fletcher, T., Leonardi, G., Grundy, C., Azapagic, A., Hutchings, T. (2009). An integrated tool to assess the role of new planting in PM capture and the human health benefits: A case study in London. *Environmental Pollution* 157, pp. 2645-2653.
- Trees and Design Action Group (2014). *Trees in hard landscapes: A guide for delivery*. London: TDAG.
- Troy, A. (2012) The relationship between tree canopy and crime rates across an urban–rural gradient in the greater Baltimore region. *Journal of Landscape and Urban Planning*, 106, pp. 267-272.
- Tyrväinen, L., Miettinen, A. (2000). Property Prices and Urban Forest Amenities. *Journal of Environmental Economics and Management*, 39, pp. 205- 223.
- UK Crime Stats (2011) What exactly does “Crime Rate” mean and how do you calculate it? [online] <http://ukcrimestats.com/blog/faqs/what-exactly-does-crime-rate-mean-and-how-do-you-calculate-it/>
- Ulrich,R. (1984). View through a window may influence recovery from surgery. *American Association for the Advancement of Science*.
- Van Renterghem, T. (2014). Guidelines for optimizing road traffic noise shielding by non-deep tree belts. *Ecological Engineering*(69), pp. 276-286. Available at: <http://users.ugent.be/~tvrenter/publicaties/guidelinestreebelts.pdf> PH [Accessed 20 June 2016].
- Van Renterghem, T., Botteldooren, D., and Verheyen, K. 2012. Road traffic noise shielding by vegetation belts of limited depth. *Journal of Sound and Vibration*, 331(10), pp. 2404-2425.
- Wells, M., Using Urban Forestry Research in New York City. *Proceedings of the ICF - Urban Tree Re- search Conference*. Birmingham, April 13-14, 2011. Forestry Commission.
- White, M (2013). Would You Be Happier Living in a Greener Urban Area? *Psychological Science* 24, 920-928.

Wolf, K. L. (1998). Urban Nature Benefits: Psycho-Social Dimensions of People and Plants, University of Washington College of Forest Resources, Fact- sheet 1.

Wolf, K.L. (2005). Business District Streetscapes, Trees and Consumer Response. *Journal of Forestry* 103 (8), pp. 396-400.

Wolf, K.L. (2007). City Trees and Property Values. *Arborist News* 16 (4), pp. 34-36.