

ISLINGTON *news*

The Journal of the ISLINGTON SOCIETY incorporating **FOIL** folio

THEN & NOW in Islington

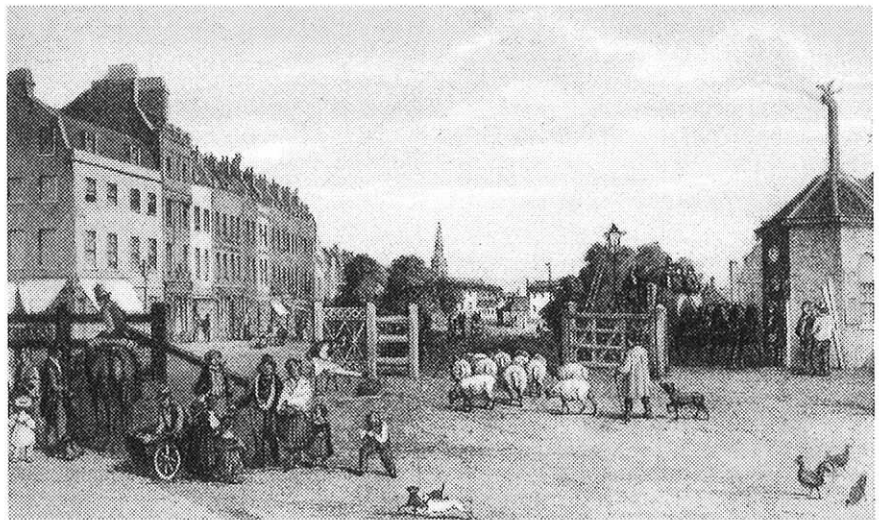
Islington's much admired Education Library Service, headed by Pam Dix, has produced some intriguing local history material. The study of the history of the local area, now compulsory in the National Curriculum, is made easier and more engaging for Islington pupils and teachers by ELS's pack *Islington Then & Now*.

There are 14 pairs of pictures with the B pictures showing familiar parts of the borough as they are today, and the A pictures showing the same scenes as they were in days gone by; some are a hundred years old, some two hundred.

No words at all appear on the pictures so pupils have to get all their information by looking; noting differences in clothes, means of transport, roads and footways, and lighting – and such things as smoke coming from chimneys, even though it is summer.

The 1906 picture of the Angel cross roads features horse buses, a single deck electric tram, and a handsome gaslight – also, almost as much things of the past, a greengrocer and a dairy at the top of St John Street.

The one pair of maps is also a huge and thought



Picture 1A



Picture 1B

OFFICERS OF THE ISLINGTON SOCIETY

President – Harley Sherlock
13 Alwyne Place,
London N1 2NL, 7226 3404

Chairman – Andrew Bosi
The Croft, Wall Street,
London N1 3NB, 7354 8514

Vice-chairman – David Gibson
35 Britannia Row,
London N1 8QH, 7226 2207

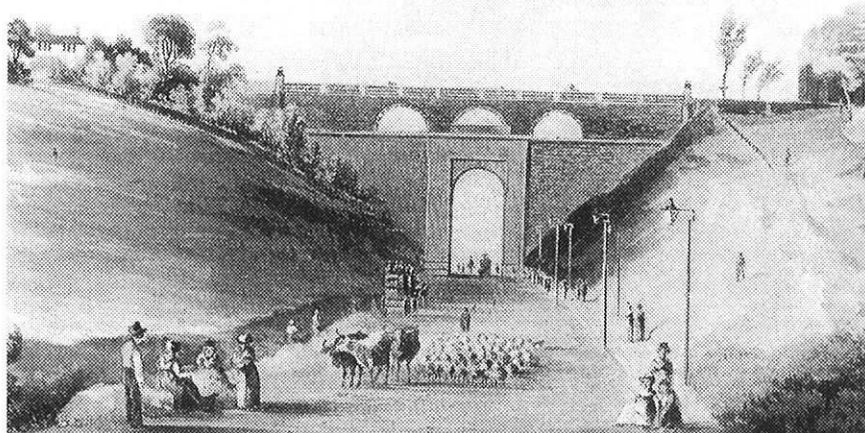
Secretary – Donald Mitchell
63 Cloudesley Road,
London N1 0EL, 7278 6573

Treasurer – Adam Bower
12 Cloudesley Square,
London N1 0HT, 7278 7663

Editor – Kathleen Frenchman
7 Barnsbury Square,
London N1 1JL, 7607 2665

Chairman of Planning,
Conservation, and Transport
Committee – Steven Barnett
20 Willow Bridge Road,
London N1 2LA, 7288 1655

~~011 26~~ 320 276
076



Picture 2A



Picture 2B

KEY TO PICTURES

1 A *The Angel, Islington High Street in 1792*

2 A *Highgate Archway in 1813*

3 A *Colebrooke Row c 1800 **

4 A *Highbury Terrace c 1800*

All the B pictures were taken in 1998

** The New River was covered over in 1861.*

ISLINGTON *news*

The Journal of the ISLINGTON SOCIETY incorporating **FOIL folio**

7 Barnsbury Square, London N1 1JL

Suggestions of local topics to be covered and articles to be considered for publication in ISLINGTON news may be sent to the Editor at the above address. Local organisations are asked to send notification of activities and events they would like to be listed. Letters to the Editor are welcome.

The journal is published in February, June and October. Items for publication should be received by the 12th day of the previous month: by 12 September for the next issue.

provoking contrast.

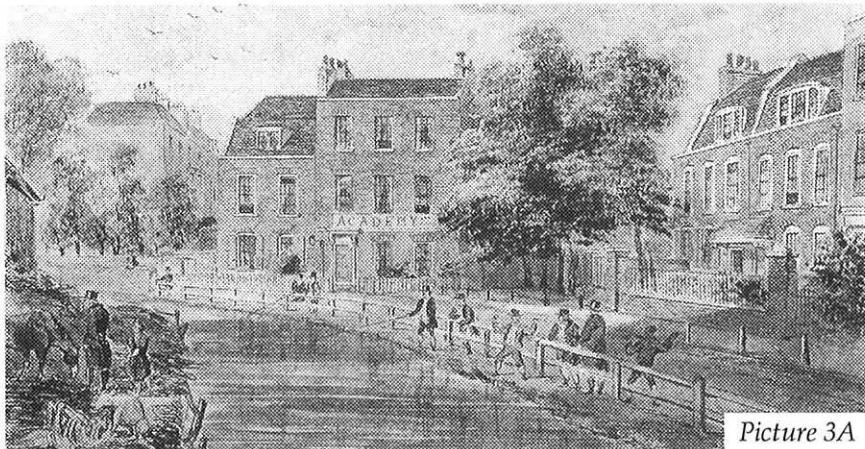
The pack can be used at different levels with children of all ages. The Teacher's Notes give a range of points to note and additional facts about the places suitable for different ages.

Launched in mid-March it is already in use in several of the borough's schools and is proving very popular.

What a pity adult Islingtonians will not get a chance to see it. They would appreciate it even more than the young.

Museum of the Streets

Another project of Islington's Education Library Service, now in production, is a historic walk around



Picture 3A



Picture 3B



Picture 4A



Picture 4B

Clerkenwell with commentaries on electronic headphones. Commentaries in the plural because it will be possible to tune into various versions of the text according to the age of the participants.

The commentaries will feature interviews with local people who have spent long lives in Clerkenwell and have memories of the village in days gone by.

The project has been named Museum of the Streets.

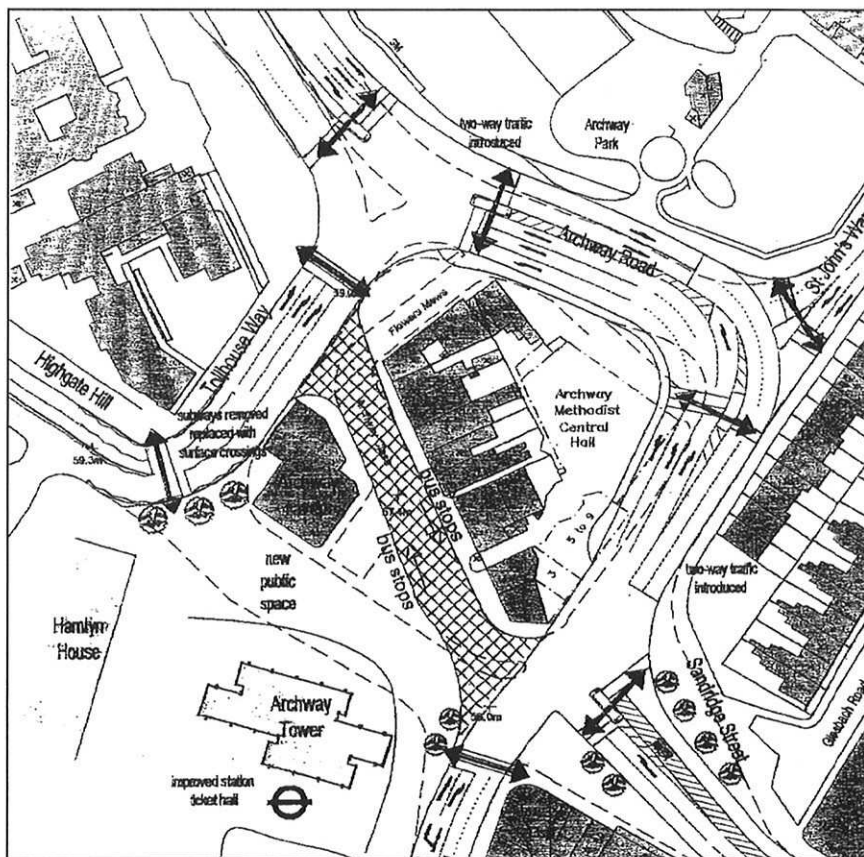
The commentaries are being researched and written by Neil and Ruth Thomson, Islington children's writers who live in Barnsbury.

*Islington Education Library Service,
Block D, Barnsbury Complex,
Barnsbury Park, N1 1QG 7527 5524
e-mail: library@iels.demon.co.uk*

Roundabouts, Congestion, Parking

ALL CHANGE AT ARCHWAY

Ideas promoted by the Highgate and Islington Societies four years ago, and accepted by Islington Council as a long-term possibility, may come to fruition sooner than expected. The plan (right) by Charter Architects is one of many options being examined for developer Orb Estates, which intends to revitalise the Archway as a real town centre. It follows, in principle, the scheme prepared by James Dunnett for the Islington Society in 1999; and, like the other options being examined, it proposes the diversion of all traffic except buses from the area between Archway Underground station, the Archway Tavern and Archway Close. This would greatly improve conditions for people changing from bus to underground and vice-versa; it would transform the setting of the now rather neglected



Archway Close Bus Mall

Archway Tavern; and it would provide a pedestrian-friendly "town square",

appropriate to a revitalised shopping centre.

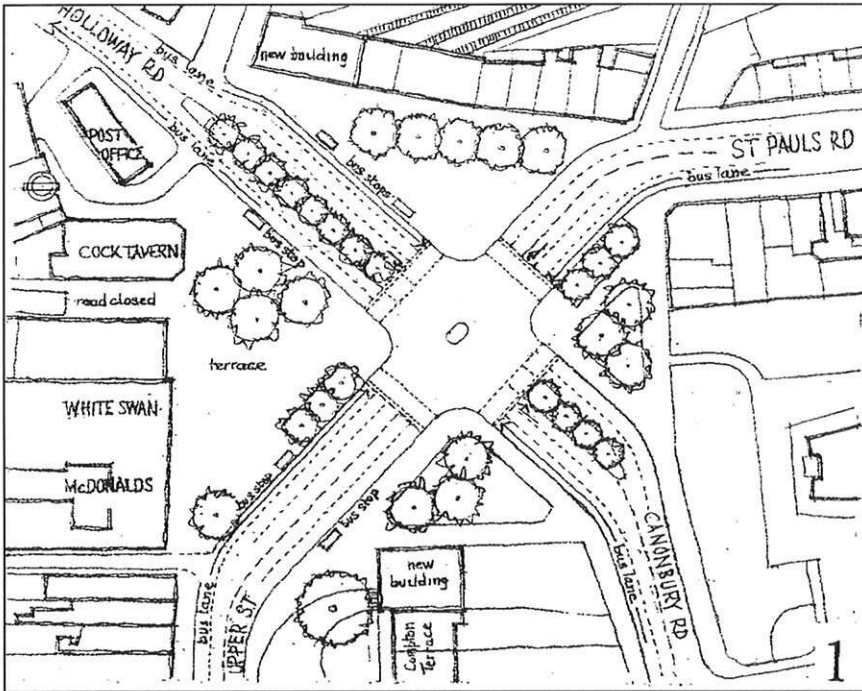
HARLEY SHERLOCK

ALL CHANGE AT Highbury Corner?

The Islington Society was formed in 1960 with the primary object of saving the best of our then rapidly disappearing Georgian and Victorian buildings. One of the Society's first tasks was to oppose the demolition of the fine statutorily listed houses at the northern end of Compton Terrace, some of which were badly damaged during the war, but two of which were in good condition

and much-loved by their occupants. The reason for demolition was the proposed reconstruction of Highbury Corner as a roundabout: a scheme that was unlikely to be effective in the long run because, as with all roundabouts in densely trafficked areas, it would take only one clogged-up exit road to block the whole roundabout and all the routes passing through it.

To make matters worse, with the construction of the Victoria Line, Highbury Corner was about to become an important bus/underground interchange: and, as every self-proclaimed traffic engineer knows, you can't have bus stops anywhere near a roundabout. The result is that Highbury and Islington station is now one of the most inconvenient interchanges in



complicated than it at first appears. A simple cross-roads, with buses-go-first traffic lights, looks the obvious answer; so that, for example, when Holloway Road is blocked, at least traffic on the Upper Street-St Pauls Road route could still get through. Such a cross-roads (diagram 1) would also provide generous pedestrian "plazas" on the west and north sides of the junction, and would give an opportunity to reinstate a proper end to Compton Terrace.

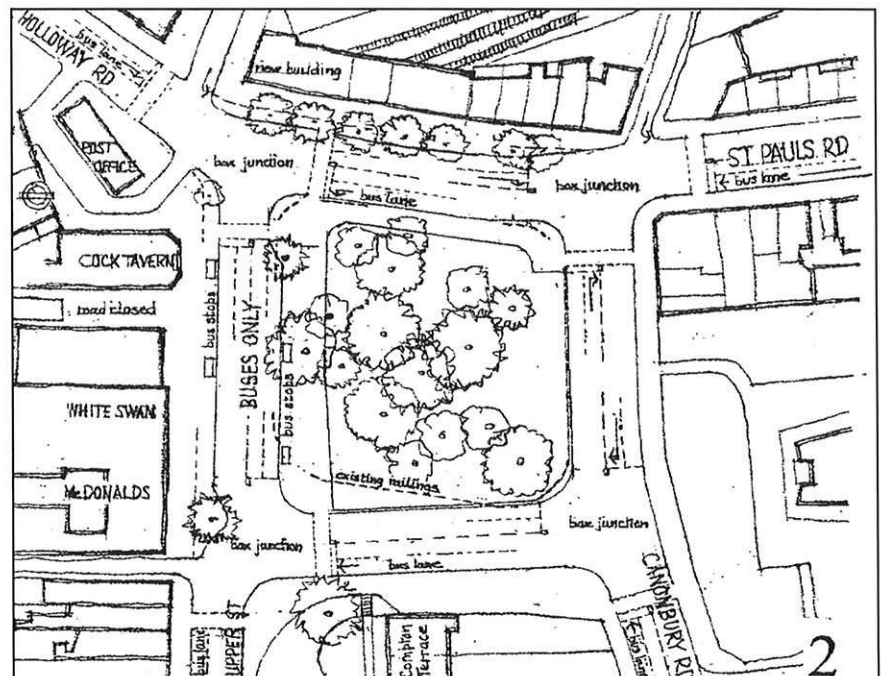
The trouble with this option is that, although there is plenty of room for new tree planting, many people would be sad to lose the trees planted in the centre of the

London.

The argument is not as simple as it looks however. If, when traffic calculations are carried out it is assumed that all the exit roads are clear, then the roundabout looks (in theory) capable of carrying more traffic than a simple crossroads. So when, in 1997, Islington Council put forward proposals for improving Highbury Corner, abandoning the roundabout was not on the agenda.

Since then the failure of roundabouts in urban areas has become more obvious, not only on account of the traffic jams they cause but also because of their danger to cyclists and their inconvenience to pedestrians: especially when the latter are public transport users switching between bus and tube, as is often the case at Highbury Corner. Furthermore, we now have a Government, a London Mayor, and an Islington

Council which all favour a reduction in the amount of traffic on Islington's roads. Now, therefore, seems the



time for looking at roundabouts afresh. Already it seems that the roundabout at Archway is likely to be abandoned, so what about another look at Highbury Corner?

Again the argument is more

roundabout at the time of its construction. Diagram 2 shows, as an alternative, all traffic except buses diverted round the north, east and south sides of the junction, with buses only allowed on

continued on page 8

FOIL

The inaugural meeting of Friends of Islington Libraries, chaired by Michael Ignatieff, was in the summer of 1991, so this year is its tenth birthday. We are celebrating with a visit from Islington MP and Culture Secretary, Chris Smith.

During the decade Chris has come to speak at a number of FOIL meetings, addressing various aspects of the politics of libraries. On this special occasion we look forward to hearing him give a talk on his academic speciality, *The Lakeland Poets*.

This is particularly appropriate as FOIL has lured so many other local literary lions to talk about literature.

We hope that as many as possible of FOIL's founder members and other former members will come to this meeting.

Unfortunately Michael Ignatieff cannot be with us as he is on the other side of the Atlantic.

For the last three years of its decade FOIL has, of course, been happily ensconced in the Islington Society; an arrangement which has proved very satisfactory.



ISLINGTON'S BEST BUILDINGS

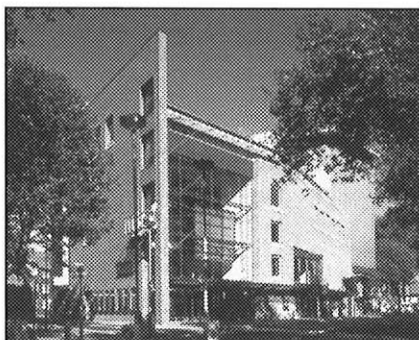
A new BEST BUILDING AWARD is being introduced by the Society this year to incorporate the former Geoffrey Gribble award, alongside the existing Sam Morris Civic Pride award.

The awards presentation will be made in September.

Nominations are requested for the building (or buildings) whose completion has made the most significant contribution to Islington in the last two years

They may be good new buildings or excellent refurbishments; large projects or small jewels. They must be visible to the public.

Please send nominations to David Gibson, The Islington Society, 35 Britannia Row, London N1 8QH, telephone 7226 2207, fax 7226 6920, e-mail IBPT@aol.com



Sadler's Wells, Gribble winner 2000

TOWARDS THE LONDON PLAN

The London Forum has arranged for Deputy Mayor of London, Nicky Gavron, to discuss The London Plan at a special consultation for London Forum members on Tuesday 10 July at 6.00 for 6.30pm at the Gallery, 77 Cowcross Street EC1.

If any Islington Society members would like to attend they should get in touch with Peter Pickering on 8445 2807 or e-mail pe.pickering@virgin.net as soon as possible after 30 June.

Bill Manley Memorial Pubcrawl

The 2001 Bill Manley Memorial Pubcrawl is on Friday 13 July. It begins at The Crown, Cloudesley Road, at 6.00pm.

Other hostelries to be visited are

- 7.00pm Islington Tup, Liverpool Road
- 7.45pm King's Head, Upper Street
- 8.30pm Compton Arms
- 9.15pm The Swan, Highbury Corner
- 10.00pm Canonbury Tavern
- 10.45pm Marquess Tavern

Members and friends are welcome to join or leave at any point.

The pubcrawl will, as always, be lead by Andrew Bosi, well-established maestro of the beer trail long before his election to the chairmanship of the Society.

THE LIBRARY WORLD

ACCESS FOR ALL?

In South Yorkshire university and other higher education libraries are open for reference and study to all public library members. Derbyshire and Sunderland library authorities have arranged for similar access.

The director of the London Libraries Development Agency, David Murray, has just begun to approach the subject. Londonwide it will inevitably be an unwieldy and difficult task as there are 33 local authorities and a very large number of higher and further education institutions.

However getting our own friendly City University and UNL, and the colleges in Islington, to welcome local

public library members ought not to be beyond the competence of the chairman, vice-chairmen and members of our education and libraries committee.

Perhaps we should ask them.

WEST LIBRARY

A local steering group has been formed to guide the thinking and fundraising for the refurbishment of the West Library Grade II listed building. It will also consider how the accommodation not needed for the library service can best be used.

LLL

Libraries for Life for Londoners, of which FOIL is a

founder member, had its first public meeting in March. The largest committee room in the House of Commons was packed to more than its capacity.

The guest speakers were Tony Travers, director of the LSE London Group, and Trevor Phillips, chairman of the Greater London Assembly. It was good that the chairman of GLA should see how engaged, not to say passionate, Londoners are about their library services.

Islington councillors from both parties and the chairman of the Islington Society were among those present. The meeting was chaired by Societies editor (and FOIL co-ordinator).

THEATRE NEWS

The company resident at the **TOWER THEATRE** for almost 50 years and soon to be ejected is to be congratulated on at last finding itself a sure home for the future. It is to occupy part of the Hornsey Road baths site. The Grade II listed old laundry at the rear of the site will be the auditorium, and the larger listed building on Hornsey Road will provide more spacious accommodation than has been available at Canonbury: namely a main entrance, foyer, cafe-bar, studio theatre,

community space, and rehearsal rooms.

An appeal is to be launched to fund these ambitious plans.

Plans for the **ROSE THEATRE** to be built on Islington Green on the site of Collins Music Hall [see Islington news Autumn 2000] have been developing apace since planning permission was granted by the Council last October. The site is now owned by Robert Bourn, husband of Sally Green who set up the Sam Collins Theatre Trust which is masterminding the project.

The architect Piers Gough has been re-engaged to ensure that the film set for Shakespeare in Love, the gift of Dame Judi Dench, is correctly placed. It is to be underground with a transparent roof so that it can be seen from above.

It is proposed that Manchester Royal Exchange Theatre should play a six months London season at the Rose; and that youth and community theatre for local residents should be directed by experts from the Sam Collins Trust.

continued from page 5

the west side. This would keep all the existing trees but provide less usable space for pedestrians outside the White Swan. It would, however, allow people to enjoy the shade of existing trees on the opposite side of the bus route; and it would also provide an even better bus/underground interchange than diagram 1.

The debate begins here. *Please send contributions to the editor.*

HARLEY SHERLOCK

PARKING RAGE AROUND CROSS STREET

Congestion is causing serious problems in Cross Street, and in neighbouring Florence Street and Shillingford Street. Parking is becoming out of control with visitors to Upper Street's vibrant bar and restaurant scene parking on both sides of the road, on the pavement, and in Florence Street right up against people's houses late into the night.

Parking on both sides of these narrow two-way streets reduces them to a single lane causing bottlenecks and tailbacks and impeding the emergency services. The Station Commander of the Upper Street Fire Station is particularly concerned about the effect of this congestion. Pavement parking prevents pedestrian access and in some cases blocks the entrance to people's houses.

Local residents have considered ways to make improvements to these three streets and have proposed a scheme of double yellow lines and one way routings which would relieve the congestion. Inquiries may be made to Christopher Procter on 7704 6003 who is leading the protest.

MORE CPZs FOR THE BOROUGH

We are glad that six further controlled parking zones are to be introduced. The current CPZ programme is -

Finsbury Park core

Notification to residents early May
On site mid-May start 6 finish end June
Operational July

Benwell/Bryantwood extension to E Zone

Consultation 11 May - close 1 June 01
Report to Committee June 01
Implementation September 01
Operational October 01

Canonbury

Consultation 11 May 01 - close 1 June 01
Report to Committee June 01
Implementation December 01
Operational January 02

Whittington

Consultation closed 23 April 01
Early results show overall support for a CPZ.
Report to Committee June 01
Implementation December 01
Operational January 02

Newington Green South and Barnsbury North

1st stage consultation June 01
2nd stage consultation Sept/Oct 01
Implementation April 02
Operational May 02

Gillespie and Finsbury Park outer

1st stage consultation July 01
2nd stage consultation October/November 01
Implementation May 02
Operational June 02

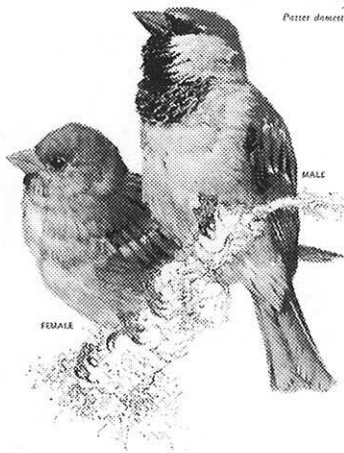
Open House Evening

The Society's Open House evening this year is on Wednesday 27 June. It begins at 6pm at Ion Global, 2-4 Old Street EC1. The refurbishment of this building by C2 Architects was highly commended in the 2000 Geoffrey Gribble awards.

We will then go to two other buildings; their whereabouts our Chairman is not at present prepared to disclose.

Our final Open House visit is at 8pm to 12 Errol Street, a former school building now converted and occupied by the Royal Statistical Society. This will be followed by an optional discussion session at the Artillery Arms.

House sparrow
Passer domesticus 12 in.



GREEN ISLINGTON

HAS ANYONE SEEN A SPARROW?

The Ecology Centre is asking everyone in the borough to look out for house sparrows during the month of July; this will be a contribution to National Backyard Biodiversity Day. The aim is to try to find reasons for the decline of this well-loved bird which used to be so common in London.

We hope Society members will take part in this exercise. Please telephone the Ecology Centre on 7354 5162 for a survey form.



PROGRESS IN THE PARKS

Wray Crescent Park is now Islington's home of cricket. After an upgrade of the sports facilities the first Cricket Event was held. It consists of an adult competition for the new Greenspace Shield and a junior tournament. Other improvements have been made after consultation with the Finsbury Park Partnership and neighbourhood groups; and new park furniture has been provided.

Construction work on the new Royal Northern Park in Holloway Road on the site of the Royal Northern Hospital is now well advanced; and the work on St Mary's churchyard in Upper Street [see Islington news February 2000] is also progressing well.

Peter Pan Park is to have a complete redesign, and the public are now being

consulted.

The Greenspace team, the Housing Service and the Lifelong Learning Service are now working together on a major regeneration of the Market Estate and Caledonian Park. Public consultation has yet to begin. Metal composting bins have already been introduced to several parks to recycle leaf sweepings into valuable compost which will improve the soil and reduce reliance on chemicals.

On Open House Day, Saturday 22 September, there will be an opportunity to visit the borough's green

showcase, the environmentally friendly Ecology Centre in Gillespie Park. It will be open from 1 to 5pm.

Every day from July to the end of September there will be an opportunity to visit the Ecology Centre's organic cafe, open from 10am to 4pm.



ANOTHER FARMERS' MARKET FOR ISLINGTON

Since London's first Farmers' Market opened near Camden Passage in June 1999 no less than nine have opened in other parts of the capital. Organiser Nina Planck is now planning Islington's second market in Finsbury. We hear she has her eye on a site near Finsbury Town Hall in Garnault Street.

London Farmers' Markets, 6 St Paul Street, London N1 7AB, 7704 9659, info@lfm.demon.uk, www.londonfarmersmarkets.com

EVENTS IN ISLINGTON

A telephone number for inquiries is given at the end of each entry.

'Book' implies there is a charge unless otherwise indicated.

JUNE

until 17 Jun NO ORDINARY JOE. Exhibition celebrating Joe Orton. Islington Museum Gallery. 7354 9442

until 17 Jun ART FROM PENTONVILLE: work by prisoners. Islington Museum Gallery. 7354 9442

Sat 16 MAGICAL MEADOWS. Walk. Ecology Centre. 12.30pm. 7354 5162

Sat 16+19-23 FRED AND MADGE. Joe Orton's first play. Tower Theatre 7.30pm + Sun 17, 3pm. Book 7226 3633

Wed 20 Lecture. Islington Archaeology and History Society. Town Hall. 8pm. 7354 3631

Thu 21 TREES IN Highbury Fields. Walk. Meet War Memorial. 6pm. 7354 5162

Fri 22 MOTH TRAPPING. Ecology Centre. 9pm. 7354 5162

Sat 23 AN INTRODUCTION TO THE MAGIC OF HERBS: day course. Ecology Centre. 10am. Book 8883 9773

Thu 28 COMPLETELY BATS. Walk. Meet Crouch Hill Community Centre car park. 9pm. Book 7354 5162

Sat 30 HERBAL FIRST AID: half-day course. Ecology Centre. 2pm. Book 8883 9773

Sat 30 MUSICAL MIDSUMMER with the ANGEL BAND. Barnsbury Wood. 6pm. 7354 5162

JULY

Wed 04 until 12 Aug ISLINGTON SUMMER SHOW: second biennial art exhibition. Islington Museum Gallery. 7354 9442

Wed 04 until 12 Aug ISLINGTON SCHOOLS ART EXHIBITION. Islington Museum Gallery. 7354 9442

Thu 05 - 02 Sep ON PAPER-NEW PAPER ART. Exhibition. Crafts Council Gallery. 7278 7700

Sat 07 ST PAUL'S SHRUBBERY FESTIVAL. St Paul's Place N1. 7359 7087



Barnsbury Wood

Sat 07 CHARTERIS SUMMER FESTIVAL. Woodfall Road Open Space N4. 7272 5628

Sat 07+8-21 A LITTLE NIGHT MUSIC. Tower Theatre 7.30pm + Sats, Suns 8-21 at 3pm. Book 7226 3633

Thu 12 COMPOSTING. Workshop. Ecology Centre 1pm. Free but book 7354 5162

Sun 15 MUCH ADO ABOUT NOTHING. Play in Barnsbury Wood at 3pm. Book 8257 4690

Thu 19 GORGEOUS GRASSES. Walk. Meet at Ecology Centre 7pm. 7354 5162

Fri 20 PLANTS, PARKS, AND PETER PAN. Street safari. Meet Peter Pan Park, Landseer Road N19. 7.30pm. 7354 5162

Sat 21 COMPOSTING. Mini drop-in sessions. Ecology Centre 1, 1.45, 2.30pm. 7354 5162

Sat 21 RESPECT ANTI-RACIST FESTIVAL. Finsbury Park. 7983 4000

Sat 21 PIP SQUEAKS AND ACRO-BATS. Walk in pursuit of bats, owls, and foxes. Meet Crouch Community Centre Car Park. Free but best to book. 7354 5162

AUGUST

Sun 12 BUTTERFLIES OF GILLESPIE PARK. Walk. Meet Ecology Centre 2pm. 7354 5162

Thu 16 AUGUST FLOWERS Walk. Meet Ecology Centre 2pm. 7354 5162

Sat 18 WOODS IN SUMMER. Walk. Meet Crouch Hill Community Centre 2pm. 7354 5162

Thu 30 REDUCE YOUR WATER USE. Illustrated talk 7pm. Ecology Centre. Free but book. 7354 5162

SEPTEMBER

Sun 02 ANGEL CANAL FESTIVAL. Regent's Canal. 7267 9100

Sun 09 GILLESPIE PARK FESTIVAL. 2pm-6pm

Sat 15 TREES IN TONGUE. Walk-hearing [and writing] poetry about trees. Meet Crouch Hill Community Centre 2pm. 7354 5162

Sat 15 ISLINGTON CENTRE 404's 50th ANNIVERSARY. Highbury Fields. 7606 8762

Sat 22 OPEN HOUSE AT THE ECOLOGY CENTRE 1pm-5pm. 7354 5162

Sun 23 A NATURAL HARVEST. Walk in Barnsbury Wood. Meet at gate 1pm. 7354 5162

Fri 28 NURSERY OPEN DAY at Islington's plant nursery. Entrance is via Islington Cemetery, High Road, East Finchley N2. Bus 263 from Archway.

OCTOBER

Sat 06 INDIAN HEAD MASSAGE. Practical workshop 10am. Book 7354 5162

Sat 13 FROM PLUMS TO PIXIE PEARS. Walk to identify food for wildlife in Parkland Walk. Meet Crouch Hill Community Centre 2pm. 7354 5162

Sat 20 FUNGAL FORAY. Walk. Meet Ecology Centre 1pm. 7354 5162

Wed 24 VOLUNTEER WORK DAY in Parkland Walk. 7354 5162

Hurry, hurry, history buffs

If you have not already secured your pre-publication price copy of William Pinks's *History of Clerkenwell*, rush to Boutle and King's bookshop behind Sadler's Wells with £35 in your hand within the next few days, ie before 20 June.

Inquiries 7278 4497

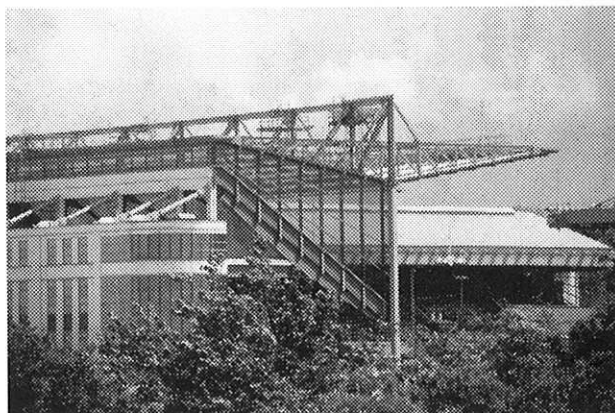
THE ISLINGTON SOCIETY CALENDAR

At Islington Town Hall unless otherwise stated.

Wednesday 27 June at 6.00pm
OPEN HOUSE EVENING
begins at Ion Global, 2-4 Old Street, EC1
(see page 6)

Wednesday 11 July at 7.30pm
THE LAKELAND POETS
The Right Honourable Chris Smith MP
(see page 6)

Friday 13 July at 6pm
BILL MANLEY MEMORIAL PUBCRAWL
from The Crown, Cloudesley Road N1
(see page 6)



Arsenal North Stand, another Gribble winner

THE ISLINGTON SOCIETY

Incorporating **FOIL** FRIENDS OF ISLINGTON LIBRARIES

APPLICATION FOR MEMBERSHIP [OR RENEWAL]

The Islington Society was founded in 1960. It works to safeguard and improve the quality of life in Islington. Its special concerns are the built and general environment, libraries, schools, health, and recreation, public transport and priority for pedestrians. New members are welcome.

Existing members who have not yet paid their 2001 subscriptions, due on 1 January, are requested to do so.

Name[s]..... Address.....

..... Telephone

I/We enclose £8 (individual)..... £10 (couple of family)..... £15 (local organisation)..... £20 (company).....

Signature..... Date

To: Adam Bower, Treasurer, Islington Society, 12 Cloudesley Square, London N1 0HT.

THE ISLINGTON SOCIETY

Incorporating **FOIL** FRIENDS OF ISLINGTON LIBRARIES