

# ISLINGTON *news*

The Journal of the ISLINGTON SOCIETY incorporating **FOIL** folio

## ARSENAL FOOTBALL CLUB

Arsenal brings business [and problems] to the borough on match days. It is also a focus for the nearest thing we have to civic pride. We allow parking to obscure the view of our wonderful Town Hall: financial considerations have closed our two magnificent public halls (Islington and Finsbury) for more than a decade; and the outward appearance of our council estates is neglected because all the money has to go on essential repairs. Financially, it makes sense to hand over responsibility for civic pride to the private sector in the form of Arsenal AFC.

Although Arsenal attracts support from all over the country, it has an above average level of attendance within one mile of its present ground. When a European Cup game was switched to Wembley, the public transport system could not cope with the extra miles travelled in the evening peak.

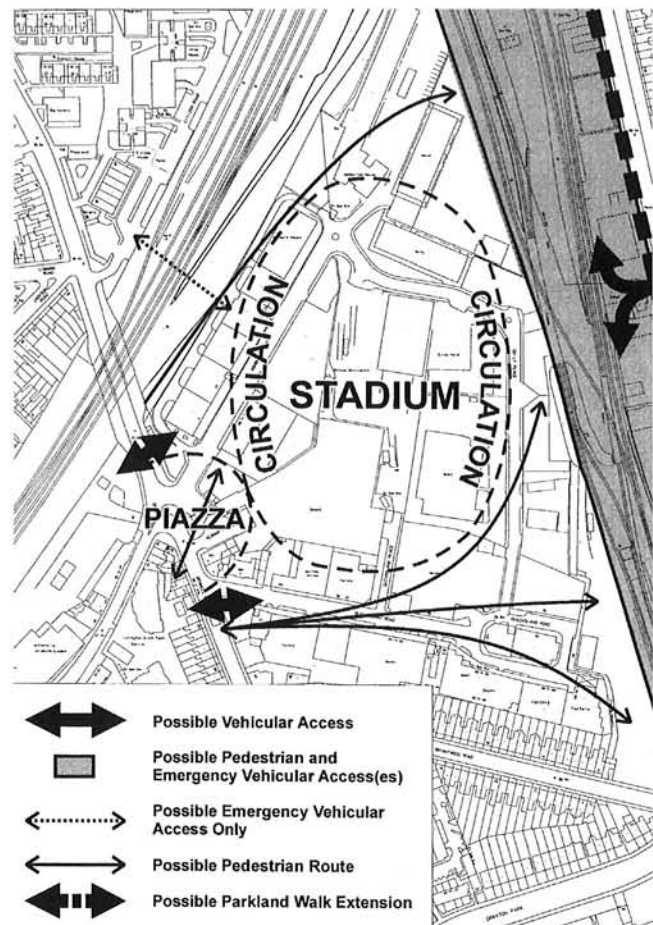
Our starting position has to be to oppose any «greenfield site» solution taking Arsenal out of inner north London. This means retaining the present site, moving to Ashburton Grove, or moving to another site well served by public transport.

We have to conclude that the first option is not sensible. We cannot go back to the days when players' wages were capped at £20 a week, and Denis Compton earned more playing cricket in the winter than turning out for Arsenal. Fans want a successful club.

A rival club whose turnover is more than double Arsenal's, and rising, calls to mind the overworked metaphor about a level playing field.

The most sensible solution would be the site well-served by public transport, which exists at King's Cross, but the Government Office for London does not favour this.

The Islington Society has therefore come to the view that Ashburton Grove will be the chosen site and that we must work to alleviate the negative impacts. This means finding suitable alternative accommodation for displaced businesses at a price they can afford, satisfactory arrangements for the refuse depot, and measures to reduce car-borne journeys to matches even if there are increased attendances. Both parking restrictions and better public transport are needed to address this last concern. Top of the list must be bringing Drayton Park station and



the Finsbury Park-Moorgate line into sensible use.

Islington's planning committee, by four votes to three after an exhaustive four hour debate, came

*continued on page 7*

## OFFICERS OF THE ISLINGTON SOCIETY

Chairman - Andrew Bosi  
The Croft, Wall Street  
London N1 3NB, 7354 8514

Vice-chairman - David Gibson  
35 Britannia Row  
London N1 8QH, 7226 2207

Secretary - Donald Mitchell  
63 Cloudesley Road,  
London N1 0EL, 7278 6573

Treasurer - Adam Bower  
12 Cloudesley Square,  
London N1 0HT, 7278 7663

Editor - Kathleen Frenchman  
7 Barnsbury Square,  
London N1 1JL, 7607 2665

Membership - Jim Lagden  
c/o Islington Museum Gallery,  
Town Hall, Upper Street,  
London N1 2UD, 7354 9442

Chairman of Planning,  
Conservation, and Transport  
Committee - Steven Barnett  
20 Willow Bridge Road  
London N1 2LA, 7288 1655

## THE DEATH OF OUR PRESIDENT

We are sad to have to report the death in February of Lord Broadbridge, the Society's President for fifteen years

*HARLEY SHERLOCK remembers him*

Tom Gamble's rear view of Peter (on the right) sketching at the V and A catches two of the noble lord's most interesting characteristics: the long, large head, and the even larger shoulders, which were prone to heave convulsively whenever he laughed, which was frequently.

Peter got a good deal of enjoyment out of conversation, and other people greatly enjoyed the contribution he made through his impish sense of humour: a talent which survived his gallant but painful struggle against cancer. He was in tragically good form when, only three days before he died, Sally and he gave an hilarious dinner party in the marvellously friendly hospital ward/bedroom/living room/



dining room that the ground floor of their house near the Angel had become. But alas his illness restricted his outside activities, and those who have joined the Islington Society recently may know little about him.

In fact Peter's early activities in the Society are lost in the mists of time. Marion Harvey recalls his running the Society's schools painting competition under her chairmanship. And I have painful memories of a very long tour of Islington's redundant churches which he

## ISLINGTON *news*

The Journal of the ISLINGTON SOCIETY incorporating **FOILfolio**  
7 Barnsbury Square, London N1 1JL

*Suggestions of local topics to be covered and articles to be considered for publication in ISLINGTON news may be sent to the Editor at the above address. Local organisations are asked to send notification of activities and events they would like to be listed. Letters to the Editor are welcome.*

*The journal is published in February, June, and October. Items for publication should be received by the 12th day of the previous month: by 12 September for the Autumn issue.*

insisted on conducting on foot. I got to know him much better when he became one of the House of Lords' two leading cross-bench speakers on transport. He would get advice from me when I was chairmn of Transport 2000; and in return he was always ready to "push" any views if he agreed with them. Even blatantly parochial Islington matters sometimes got an airing in Hansard, disguised as microcosms of great national issues!

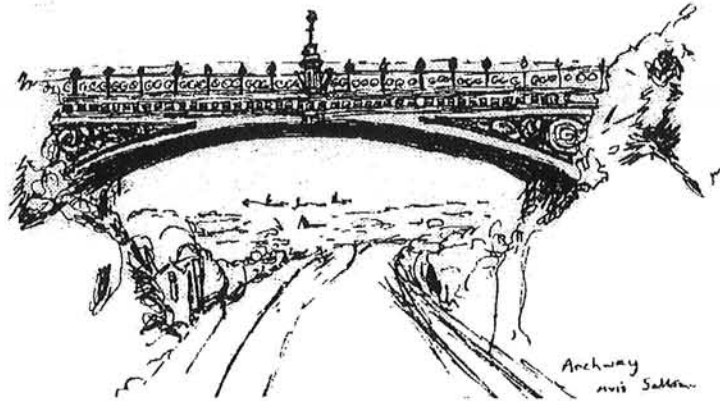
But Peter's speeches in the House of Lords were not confined to transport. One of his most effective, partly because it came from a cross-bencher, was his broadside against the abolition of the GLC: and many of us recall his telling the last government that it shoul close down Virginia Bottomley rather than Bart's Hospital.

Peter will be remembered as a party-free politician, an accomplished silversmith, a cartoonist, and as a raconteur. But I will remember him, above all, as the writer of cheeky notes (not letters) illustrated with rude drawings of both sender and recipient. Without him, and his spiky writing, Islington will be a poorer place; but the memory of his courage in adversity will continue to inspire.

## AROUND THE BOROUGH

### ISLINGTON INTERNATIONAL FESTIVAL

The theme of the Islington Internationasl Festival 2000 is FOOD in all its aspects. It will be celebrated with music, dancing, cooking, street theatre, and much else. Appropriately called FEAST, the festival runs from 19 to 24 June. On the last day a spectacular mile-long banqueting table will be installed in a gloriously traffic-free Upper Street. The illuminated finale begins at 9.30pm.



### ARCHWAY BRIDGE

July brings the hundredth birthday of the present ARCHWAY BRIDGE, an imposing and important landmark in north Islington. Extensive centenary celebrations have been organised by the year-old Hornsey Lane Association: they include a musical melodrama, maypole in the park, events at two churches, the Hindu temple, and the Craft Centre, and much more.

Full brochure- 20 Hornsey Lane N6 5LX, 7561 0724.

### ISLINGTON CASE

An Islington branch of CASE, the Campaign for State Education, was set up earlier this year. It claims that all children, whatever their circumstances, have the right to the best in state education.

Islington CASE - c/o 114 Thorpedale Road, N4 3S .

### ISLINGTON CARERS FORUM

ICF is a self-help group run by and for people who look after someone who is ill or has a disability. It gives information and support there is a free newsletter and factsheet pack.

There is now a proposal to set up a special group for people who have to deal with severe mental illness.

ICF - Unit 1, 53 Hargrave Road, N19 5SH, 7263 9080.

### PETER PAN PARK

A new group has been formed in the Sussex Way area to improve the environment, and especially the park. Two walks are being led by local guide, Peter Powell, to highlight the history of the area - on 20 June, adults, and 23 July, young [see EVENTS].

Peter Pan Park Action Group - 7263 7778. Ruth Robinson.



## ISLINGTON' S PLANNING NEWS

### THE ANGEL DEVELOPMENTS

What with the new bus stops in front of the Upper Street high pavement, and the Parkfield development behind, the Angel area currently looks like a cross between a bombsite and a building site. But, in spite of the unnecessary damage to trees at the bus stop and the unnecessary loss of established shops on the Parkfield site's Liverpool Road frontage, both developments were needed. The bus stop had to be moved to make way for a desperately needed additional pedestrian crossing half way between the existing crossings at Islington Green and Liverpool Road. And something had to be done about the decayed core of the old village of Islington, represented by the derelict land at Parkfield Street and its surroundings. That we seem unable to rejuvenate an area without first pulling a bit more of it down, is probably a reflection of the current lack of imagination not just in the way we plan and design replacement buildings but also in the way we finance them.

Nevertheless both developments are happening; and it is my view that the Angel will be a better place for them. Liverpool Road will certainly feel better when both sides are in full use. And there can be little doubt that, as has happened in most successful town centres, sheer numbers of pedestrians will eventually force out the through-traffic which is so patently incompatible with a decent shopping environment.

### FINSBURY SQUARE

If some of us were concerned about the loss of historic buildings in Liverpool Road, we have much more to be worried about at Finsbury Square where planning permission was given in April for the demolition of number 27 (a locally listed 1920s "Edwardian" office building) in spite of strong objections from English Heritage and

from our own Conservation Officer, Alec Forshaw.

### SOME GOOD NEWS

On a more cheerful note, run-down corners of the borough have been subject to planning permission for interesting modern buildings that should prove sympathetic to their surroundings: flats at Harris Wharf (overlooking City Road basin); photographic studios at 29-30 Great Sutton Street; and terrace housing at Paradise Passage behind 491-493 Liverpool Road.

The Planning Committee has turned down an application from Clubs-N-Bars Limited for "more of the usual" on the corner of Essex Road and St Peter's Street. It has also refused permission (rightly in my opinion) for a rather nice modern building which would have taken the whole of a corner building's garden in Ambler Road. And it has deferred permission to fill in the open face of the locally listed car-repair workshop behind the Hare and Hounds in Upper Street.

### DENSITIES

On the question of planning densities, it has also tried, through a well-organised conference, to take account of conflicting views; and it seems, particularly, to have taken note of the need for different guidelines for different parts of the borough. Inevitably some maximum permitted densities will have to be raised: if only because the densities in the old Development Plan were set at a level well below the density in most of our conservation areas, which have proved so popular.

Considering the constraints imposed upon it by a national planning system which has a built-in presumption in favour of development, our council doesn't do a bad job!

HARLEY SHERLOCK

## THE UNION CHAPEL PROJECT

Set up in 1990, the charity, the Union Chapel Project, has the dual tasks of ensuring that all the spaces of the great Union Chapel are put to good use, and raising money for the restoration of the splendid Grade II\* listed building.

For the previous ten years the Friends of Union Chapel and the congregation were working to prepare for this extensive project.

The Union Chapel building was designed in 1877 by James Cubitt, a specialist in the design of non-conformist churches. His preferred octagonal form ensures that the whole congregation can see and hear whoever is in the pulpit. Of the 1,650 seats there are only six from which the occupant cannot see the pulpit.

Because of its great size and magnificent interior Union Chapel has been called the 'cathedral' of congregationalism.

It is one of the few large examples of this type of building to have survived and still have virtually all its original fittings. Fortunately still intact are the 'Father Willis' organ with the hydraulic motor which originally provided wind; the lovely decorated pulpit in marble and stone; the fine ventilation system drawing air through hidden pillars to exit via a vast fan in the cupola; and even the gas lighting jets from before electrification.

Funding has come from a number of sources to open a studio theatre in the lovely galleried Sunday school, and to develop the great main Chapel for occasional large performances. There has also been financial support for work with homeless people, with people with disabilities, and with a wide range of local cultural groups.

A tireless maintenance worker has been fighting a losing battle over the years to halt damage caused by weather and general decline. But for his work the building would be in a far worse state.

Major restoration work has begun. The Joint Church Grant Scheme, a partnership between English Heritage and the Heritage Lottery Fund gave a grant in 1999 for work to be completed in 2002. This

allows for emergency work to the tower which has been in a desperate state for some years, the re-tiling of the main dome and repair of the cupola. This will halt the terrible damage done by the ingress of rain water.

Further funding is needed to repair the brickwork and stone work of the walls and windows; to clean and restore the interior, and lastly to restore the magnificent Father Willis organ.

Each of these will cost about the same as the first tranche of work now under way, around £500,000.

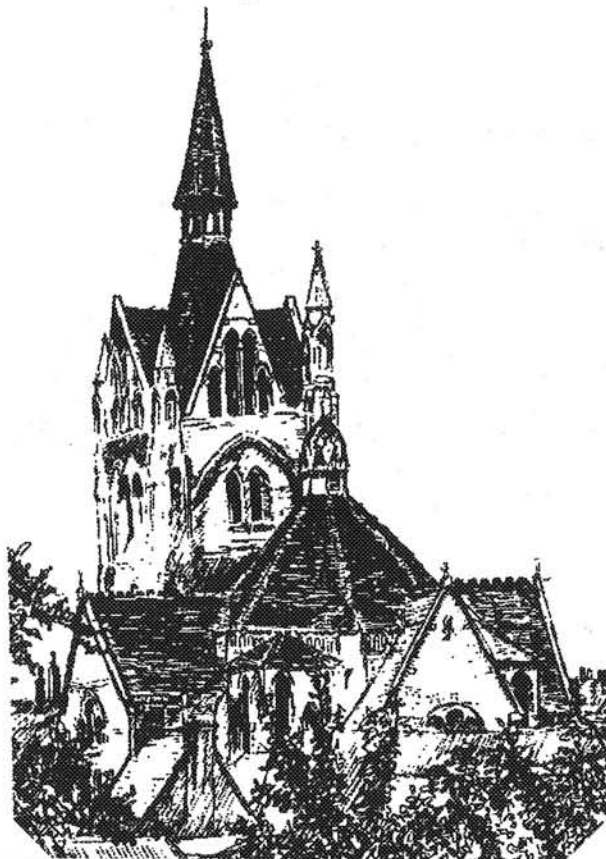
For the next grant matching funding of £165,000 has to be found. Some of this has been raised but there is still a long way to go.

The 'Highpoint Appeal' has been set up by the Friends to help raise the money.

Donations to the Appeal or inquiries may be made to the Vestry, Compton Avenue, Islington N1 2XD.

Union Chapel is well worth seeing and Islington Society members would be welcome. The building is open on weekdays from the rear entrance but the main spaces are often in use. It is advisable to get in touch with the Revd Dr Janet Wootton on 7354 3631 to arrange a visit.

The chapel's website - [www.unionchapel.org.uk](http://www.unionchapel.org.uk) contains regular updates on activities and work in progress.





## GOOD NEWS!

To the delight of everyone who has already heard Harley Sherlock was elected the Society's President at the last executive committee meeting. There must be very few long established organisations which can rejoice in a president who was founder member and has been a leading active member for the last 40 years.

From 1996 to 1999 Harley was an outstanding chairman - imaginative and diligent. We are sure he will be an outstanding president. We are lucky to have him.

### LBI ENVIRONMENT COMMITTEE

The Society has been invited to send two representatives to take part in Environment Committee meetings. We have asked Steven Barnett and David Peel, the chairman and secretary of our Planning, Conservation, and Transport to take these two places.

## BILL MANLEY MEMORIAL HERITAGE TOUR

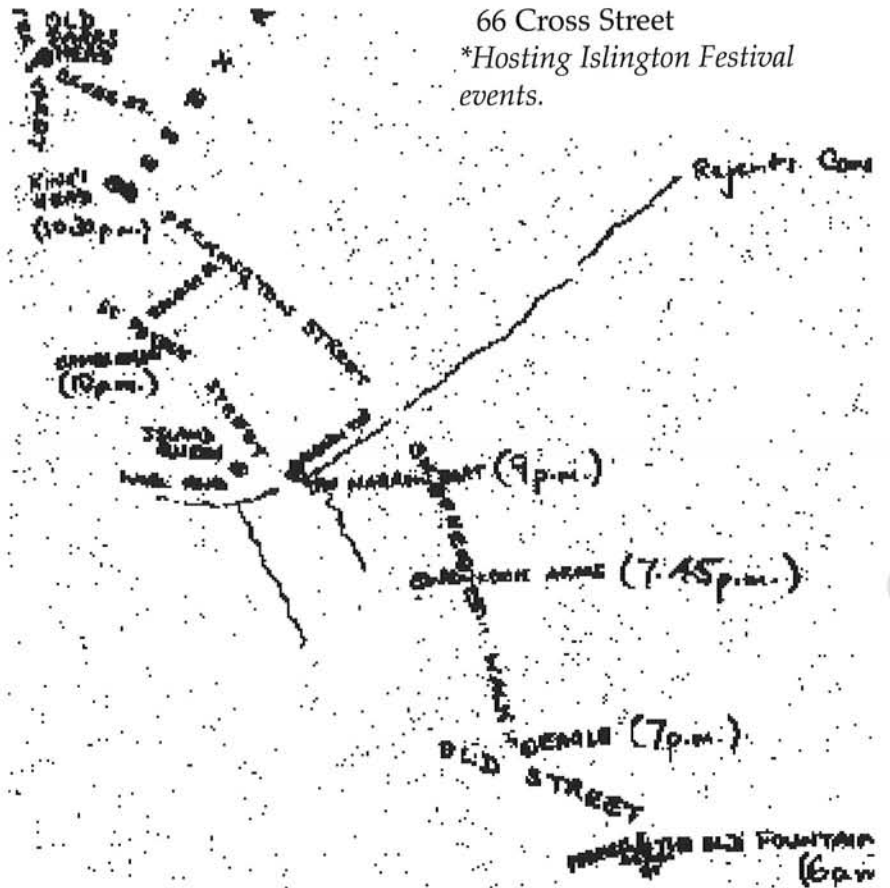
For this year the Society's annual pilgrimage in memory of the late Bill Manley, specialist in music hall and other entertainment offered by the borough, has been renamed 'heritage tour'.

As always it will be led by Andrew Bosi.

For the first time there is a timed route so that members or guests who have not the time [or the stamina] may join when they please.

- 6pm The Old Fountain, Peerless Street/Baldwin Street
- 7pm The Eagle, 2 Shepheress Walk
- 7.45 Wenlock Arms Wenlock Street
- 9pm The Narrow Boat, Baldwin Terrace
- [9.30 Island Queen, Noel Road]
- 10pm The Cambridge, 30 St Peter's Street
- 10.30 King's Head, 59 Essex Road
- 10.59 Old Parrs Head,\* 66 Cross Street

*\*Hosting Islington Festival events.*



## THE EXECUTIVE COMMITTEE

At the agm all the existing officers were re-elected, with the exception of David Holland who expects soon to be leaving the borough. We thank him for his service as recruitment officer.

We welcome Emma Gowers as the only new member of the executive committee.



## THE GRIBBLE AWARD

The outstanding winner of the 2000 Geoffrey Gribble Award, the last of the series, is Sadler's Wells Theatre. The architects are *Renton Howard Wood Levin and Nicholas Hare Architects*.

Three other projects were recognised by the judging panel for their considerable merit and are highly commended. They are

2-4 Old Street refurbishment  
*C2 Architects*

UNL Tower extension  
*Rick Mather Architects*

Wynford House  
refurbishment  
*Avanti Architects*

The presentation will be made at the winning building, Sadler's Wells Theatre on 21 June at 6pm. Time to be confirmed 7226 2207. DAVID GIBSON

*continued from page 1*

## ARSENAL

to much the same conclusion and agreed the Planning Briefs for both the Ashburton Grove site and the existing Highbury stadium.

The Society's submission to the Council's consultation is available to be read at the Planning Department; alternatively, members may obtain a copy from the Secretary. [Please send a stamped self-addressed envelope.]

ANDREW BOSI

## A BETTER MUSEUM FOR ISLINGTON?

### LET'S HOPE

After the formal business at the Society's agm Iain Carson and Joanna Bacon of Allies and Morrison Architects presented their visionary and exciting plans for the new Islington Museum to be installed in the former public hall within the Town Hall.

These plans are the subject of a proposed bid for funds to the National Heritage Lottery Board. They include a double cube central area incorporating the stage and central part of the public hall

. This dynamic and versatile space could be used for temporary exhibitions, for conferences and seminars accommodating up to 400 people, and for many other purposes. These would provide a very necessary revenue stream for the museum project which is essential for any lottery bid. Further galleries would be formed under the balcony area, including a high security area for both the Sickert collection and for loan material which may be borrowed under the government indemnity scheme for high value items

All the alterations would be in harmony with the existing Grade II structure and would have the approval of the English Heritage conservation department.

Bruce Tattersall, chairman of

the Islington Museum Trust, said that the recent change of administration of Islington Council was endangering this high quality bid. The Council had withdrawn the lottery bid from the last meeting of the education committee to which it was to be submitted for final approval before being presented. The reason for this was that the Council has set its agenda with the overriding intention of realising its assets in order to reduce council tax. It therefore decided to give a six week opportunity to outside organisations to make tenders for commercial use of the hall.

The museum is the product of a partnership between the friends, the council, and the trust. Bruce said the new museum would be accessible, friendly, inclusive, and an instrument for social change. It would be a tragedy if all the hard work put in by the friends, the trust, the architects, council officers, councillors, and the project committee was to come to nothing. Their efforts had revitalised a council building which despite heritage listing had lain empty and neglected for ten years.

All local organisations and individuals are urged to lobby for this splendid plan to be put into effect.

BT AND HS

## THE DECLINE OF THE LOCAL PUB

*The Chairman and the Editor lament the loss of historical associations and decent beer*

For all that we are told the leisure industry will boom in the next decade, there is a continual battle to retain the local pubs which already exist in Islington. At a recent Development Control Committee, Cllr Richard Hesletine suggested that the Society should found a Friends of Islington Pubs section. [FOIP to go with FOIL?]

This was prompted by the loss of two more pubs, the Mildmay Tavern and the Pocock Arms, hard on the heels of the Albert the month before. The Pocock Arms attracted some support in the local press, and unlike the others seemed to be some way from the next nearest local. The application was for mixed use, retaining "A3" use on the ground floor, and so was approved.

As well as a local hostelry for the most residential and least well provided part of Caledonian Road, it was the only remembrance of the Pocock family, landowners in West Islington.

The Pocock Arms is not the only public house with local historical significance to have been lost in recent years

When the Cloudesley Arms

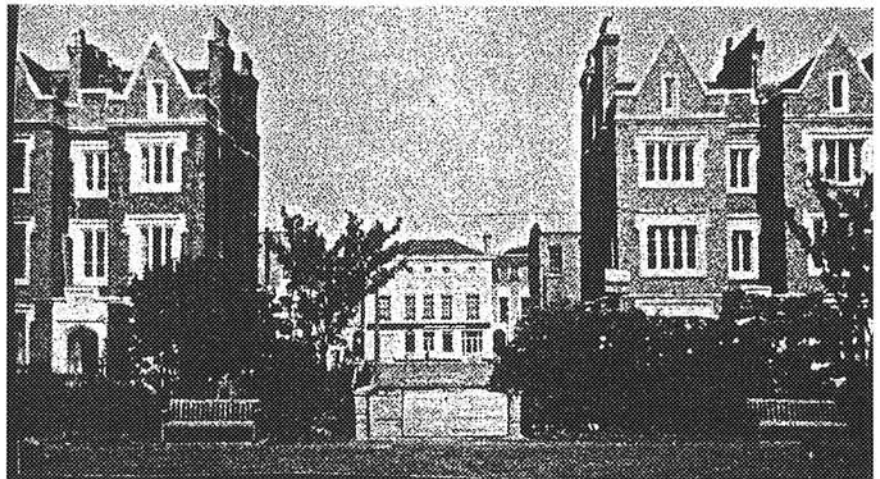
in Cloudesley Place closed its elegant innsign was much missed. It showed three monks saying the masses for his soul which Richard Cloudesley, the sixteenth century benefactor of the parish of Islington, had ordained in his will.

The closure of the Drapers' Arms in Barnsbury Street is also to be regretted. It was built in 1840 in Italianate style on Drapers' Company land to close the vista from Cloudesley Square and Lonsdale Square.

After a change of ownership

This is an adjusted form of the original name of the company. The future of the building is now in doubt: as Harley Sherlock reported in October 1999 planning permission for a change to residential use was not granted.

In other parts of the borough, it is difficult to justify the number of pubs. More worrying is the demise of real ale within the pubs that remain. In Canonbury East (an area of just over 100 acres), where fifteen pubs have been reduced to eleven in the last year and a half, only one now



**The Arms of the Guild of the Blessed  
Virgin Mary for the Relief of the Misery of  
the Poor Drapers of the City of London**

in 1989 the original legend  
was restored to its facade.

boasts a pint of ale worth  
walking to drink.

## SPEED, SPEED, SPEED

Speed on our roads is a growing and frightening problem. Steven Barnett, chairman of the Society's Planning, Conservation, and Transport Committee, will consider some tried and some possible solutions in the autumn issue. Other aspects of traffic and transport in the borough will also be discussed.

Readers views would be very welcome. Please write soon to the editor.





*The new children's library at West with the floor cut away to show the IT room below*

## WEST LIBRARY, and ELSEWHERE

The proposals for refurbishing and making fully accessible West Library [see last issue] have been presented in a report by architects, Butler and Hegarty, and community consultant, Antonia Benedek. The proposed lift and other measures for accessibility are approved by the Civic Trust for a Grade II listed building.

Putting the plans into effect will take a great deal of money. Chris Smith MP who was at the presentation offered to help identify the "jigsaw" of sources of funds.

Chair of education committee, James Kempton, was also benign

### ELSEWHERE

FOIL sent a written submission to the House of Commons Culture, Media, and Sport Committee's inquiry into libraries; and the Society's Editor, Kathleen Frenchman, gave oral evidence on behalf of Libraries for Life for Londoners, a London wide body of which the Society is a member.

The committee's report is encouraging, as are the DCMS's draft standards for public libraries. Comments are due by 3 July.

It is hoped that praise and goodwill will be followed by better funding .

## MILTON BABULALL

*The Chairman pays tribute to a friend and colleague, and popular Islington councillor*

Milton came to England forty years ago, involved himself in campaigns for tenants and against racial discrimination, and then became a councillor in 1982, representing Hillrise and Highbury until his death.

Incredible as it may seem now, up to that point there had been no black councillors in Islington, ninety years on from the election to Parliament of Dadabai Naoroji in Finsbury.

Aside from politics, Milton was a great friend. His legendary late running (though he was always there when it mattered) was in part due to the fact that he was so well known there was always a high chance of bumping into someone

who had to stop and talk.

Another contributory factor was his willingness to do any of the jobs no-one else would do, so that all too often one meeting would run into the next.

He was also the only Chief Whip in my time on the council to understand fully what the job should entail. Plenty could play their part as a "leading member" working with the Leader. The more important task of keeping in touch with backbenchers, and ensuring they were enabled to fulfil their role, was all too often neglected. Milton understood this and took time to understand his comrades and to work round our idiosyncrasies.

ANDREW BOSI

## EVENTS IN ISLINGTON

### JUNE

until 25 June POSTERS ON THE WATERWAYS. Exhibition. London Canal Museum. 7713 0836

Mon 19 to 24 "FEAST" ISLINGTON INTERNATIONAL FESTIVAL

Sat 17 MUSICAL MIDSUMMER WITH THE ANGEL BAND in Barnsbury Wood 6-8.30pm. 7354 5162

Mon 19-24 FEAST. Festival exhibition. Islington Museum Gallery. 7354 9442

Tue 20 PETER PAN PARK walk. North Library at 7.30pm. 7226 8333.

Thu 22 ISLINGTON PEDESTRIANS ASSOCIATION. Open meeting. Town Hall at 7.30pm. 7359 0609.

Thu 22 to 03 September 3UP Exhibition Crafts Council Gallery 7278 7700

Sat 24 FAMILY ADVENTURE TRAIL. Islington Ecology Centre 2-4pm. 7354 5162

Sat 24 "PRIDE OF LEE" boat trip. Three Mills to Canal Museum at 10am. 7515 8558

Sat 24 FEAST. A banquet for 80,000 in Upper Street; Festival finale at 9.30pm. 7689 9888.

Sun 25 "PRIDE OF LEE" boat trip London Canal Museum to Three Mills at 11am. 7515 8558

Sun 25 DON'T START FROM HERE a musical play. London Canal Museum. 7713 0836

Mon 26 BEER STREET an entertainment London Canal Museum. 7713 0836

Tue 27 to 22 October FANCY A DIRTY WEEKEND exhibition on canal restoration London Canal Museum

### JULY

Wed 05-03 Sep MADE BY CHILDREN -art exhibition. Islington Museum Gallery. 7354 9442

Thu 06 THE WILD WATERSIDE. Lecture by Bob Gilbert. London Canal Museum at 7.30pm. 7713 0836

Tue 11 BIKE MAINTENANCE drop-in Islington Ecology Centre at 7pm. 7354 5162

Sat 15 BIRDS, BUTTERFLIES, AND OTHER BEASTIES. Walk. Islington Ecology Centre at 2pm. 7354 5162

Sat 15 CARLO GATTI'S BIRTHDAY PARTY. Barbecue. London Canal Museum. 7713 0836

Sat 22 WOODS IN SUMMER. Walk. Crouch Hill Community Centre Car Park at 2pm. 7354 5162

Sun 23 PETER PAN PARK walk. North Library at 7.30pm. 7226 8333

Tue 25 TREES IN HIGHBURY FIELDS. Walk. Highbury Fields swimming pool entrance at 6pm. 7354 5162

Thu 27 ACTIVITY DAY FOR 6-12 YEAR OLDS. London Canal Museum. 7713 0836

### AUGUST

Wed 02-27 Aug LAURIE JOSEPH - wood sculpture exhibition. Islington Museum Gallery. 7354 9442

Thu 03 ACTIVITY DAY [6-12s] London Canal Museum. 7713 0863

---

Sat 12 BATS ALONG THE WALK . Walk. Crouch Community Centre car park at 9pm [must book] 7354 5162

Thu 14 to 29 October JERWOOD APPLIED ARTS PRIZE - jJewellery exhibition Crafts Council Gallery. 7278 7700

Sun 13 GUIDED CANAL WALK London Canal Museum at 3pm.. 7713 0836

Wed 13 THE CALEDONIAN ASYLUM Islington Museum Gallery. 7354 9442

Thu 17 ACTIVITY DAY [6-12s] London Canal Museum 7713 0836

Sat 23 WAYFINDING ON PARKLAND WALK. An orienting experience. Crouch Hill Community Centre car park at 2pm. 7354 5162

Wed 23 THE GREEN IN THE GREY. Street safari. Farringdon tube station at 6.30pm. 7527 4953

Sun 24 ISLINGTON CREMATORIUM OPEN DAY 10am-4pm. 7527 4953

Thu 24 ACTIVITY DAY [6-12s] London Canal Museum 7713 0836

**OCTOBER**

Mon 24 FALCONRY DISPLAY. Highbury Fields at 12 noon and 3pm. 7527 4953

Thu 05 THE GRAND UNION CANAL Lecture London Canal Museum at 7.30pm 7713 7700

**SEPTEMBER**

Sun 03 ANGEL CANAL FESTIVAL. City Road Basin 11am-5pm. 7267 9100

Sat 14 INSECTS, BUGS, AND OAK TREES. Walk. Crouch Hill Community Centre community car park at 2pm. 7354 5162

Thu 07 THE ROYAL MILITARY CANAL Lecture London Canal Museum at 7.30pm 7713 0836

Sat 21 WILDLIFE WALK. Barnsbury Wood at 10am. 7354 5162

Sat 09 A NATURAL HARVEST. Walk Barnsbury Wood at 1pm. 7354 5i62

Mon 23 OPEN DAY AT THE CRAFTS COUNCIL GALLERY 7278 7700

Sun 10 GILLESPIE PARK FESTIVAL 2-6pm. 7354 5162

Tue 24 to 03 December THE WATERWAYS ART SHOW London Canal Museum 7713 0836

Tue 12 THE GREEN IN THE GREY - 2. street safari. Old Street tube station at 6.30pm. 7527 4953

Sat 28 FUNGAL FORAY. Islington Ecology Centre at 2pm. 7354 5162.

THE ISLINGTON SOCIETY. APPLICATION FOR MEMBERSHIP [OR RENEWAL]

The Islington Society was founded in 1960. It works to safeguard and improve the quality of life in Islington. Its special concerns are the built and general environment, libraries, schools, health, and recreation, public transport and priority for pedestrians. New members are welcome

Existing members who have not yet paid their 2000 subscriptions, due on 1 January, are requested to do so.

Name[s].....

Address..... Telephone.....

I/We enclose £8 (individual)..... £10 (couple or family)..... £15 (local organisation) .... £20company.....

Signature.....Date.....

To: Adam Bower, Treasurer, Islington Society, 12 Cloudesley Square, London N1 0HT



# THE ISLINGTON SOCIETY CALENDAR

At Islington Town Hall unless otherwise stated

Wednesday 21 June at 5.30 or 6pm  
THE GEOFFREY GRIBBLE AWARD PRESENTATION  
at Sadler's Wells Theatre  
*check time on 7226 2207*

Friday 23 June at 6pm  
BILL MANLEY MEMORIAL HERITAGE TOUR  
From the Old Fountain, Peerless Sreet, EC1  
Led by Andrew Bosi

Sunday 16 July 11am to 5pm  
BOOKSTALL AT CLERKENWELL FESTIVAL

Wednesday 27 September at 7.30pm  
HELL OR DAMASCUS?  
Derek Turner, Traffic Director for London

Wednesday 25 October AT 7.30pm  
A ROUTEMASTER EVENING  
conducted by Steven Wood  
A drive followed by a talk at the Town Hall  
Cost £3, maximum 60 places  
From Newington Green bus stand

Monday 27 November at 7.30pm  
THE NEW LONDON  
Tony Travers, Director, Greater  
London Group, LSE  
JAMES OGILVY-WEBB MEMORIAL LECTURE  
and 40th anniversary celebration  
at the Tower Theatre

## BOOKSTALL

We are once again running a bookstall at the Clerkenwell Festival Sunday market to raise the profile of the Society. For it to be a success we need gifts of books people no longer want, and lots of help. If you can be with us between 10am and 5pm on Sunday 16 July, especially at 10 am to set up the stall and make it look good, please telephone John Newland on 7607 6445

Also telephone John if you have books to spare you would like to be collected.

If you are able to bring your books to us please telephone Kathleen Frenchman on 7607 2665.

---

# THE ISLINGTON SOCIETY

Incorporating **FOIL** FRIENDS OF ISLINGTON LIBRARIES

---